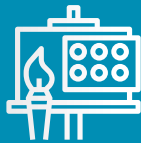
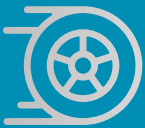




# ANDOVER COLLEGE



YOUR UNIQUE JOURNEY

# CONTENTS

4	Our vision
6	You – at the heart of our decision making
8	My personal planner
10	Student wellbeing and support
14	Additional Learning Support
16	College life
18	Careers
20	Career planner
22	Outstanding facilities
24	Open Events & College checklist
26	Andover Alumni
28	Choosing the right level for you
30	Guide to BTEC qualifications
32	The choice is yours & application checklist
34	T Levels are coming...
36	Foundation Learning
38	GCSEs
40	A Levels
42	Higher National Certificate (HNC)
44	Apprenticeships

## OUR COURSES

We have a wide range of courses at different levels available – a specialist sixth form alongside a varied choice of further education.

46	Access to Higher Education
48	Accounting
50	Bricklaying
52	Business and Marketing
54	Carpentry and Joinery

56	Childcare and Early years
58	Computing and Games Design
62	Creative Arts
64	Criminology
66	Dance
68	Design
72	Digital Media
74	Electrical Installation
76	English
78	Extended Project Qualification
80	Film and Media Studies
82	Financial Studies
84	Geography and Environmental Studies
86	Hairdressing
90	Health and Social Care
92	History and Politics
94	Law
96	Maths
98	Motor Vehicle
102	Music
106	Performing Arts
110	Philosophy, Religion and Ethics
112	Production Arts (Stage management)
114	Psychology and Sociology
116	Science
120	Sport and Leisure
124	Uniformed Services

126 Getting here

128 Money matters

# START YOUR UNIQUE JOURNEY

USE THESE PAGES TO START!



MY PERSONAL  
PLANNER – PAGE 8



CAREER PLANNER  
– PAGE 20



COLLEGE CHECKLIST  
– PAGE 24



CHOOSING THE RIGHT  
LEVEL FOR YOU – PAGE 28



THE CHOICE IS  
YOURS – PAGE 32



FIND OUT MORE  
[ANDOVER.AC.UK](http://ANDOVER.AC.UK)

# OUR VISION



I am delighted you are considering Andover College as your next step in education – great choice! We have built an accomplished team providing outstanding teaching, exceptional pastoral and wellbeing

support, all mapped around a personalised approach which we think is unrivalled. We'll support you to fulfil your maximum potential, giving you the very best start to your future career.

Andover College is part of the Sparsholt College Group, which has a proud 120-year-plus history of offering a great learning experience. We have the resources to draw on to support you in all circumstances. I was delighted with how our college community responded so positively, learnt and developed in the face of recent challenges. We know that, whatever the future brings, Andover is ready!

Our commitment to you runs through everything we do at Andover College, supporting every part of our college community. We'd love you to join us and let Andover College take you on your unique journey.

**Julie Milburn,  
Principal and Chief Executive**







## NEIL HOPKINS OBE, BSC, MED

Chair of Governors, Sparsholt and Andover College

Our Chair of Governors has played a leading role in the successful delivery of A Levels as the former Principal of a sixth form college for over 20 years alongside his important contributions to bodies such as UCAS and the Maple Group of top performing colleges.

**“ WELCOME TO OUR ANDOVER COLLEGE PROSPECTUS. WE GOVERNORS ARE VERY PROUD OF THE OPPORTUNITIES THE COLLEGE OFFERS. I AM CONFIDENT THAT YOU WILL FIND A COURSE TO HELP YOU HAVE THE FUTURE YOU WANT.”**





# YOU – AT THE HEART OF OUR DECISION MAKING



We pride ourselves on giving our students all the knowledge, skills and support needed to flourish while at college. We have found that our approach of developing the whole person delivers the best academic results, making us one of the best performing colleges in Hampshire, measured by our consistently high pass rates and value added scores over recent years.

We challenge and stretch our students, within a nurturing environment, to be the best they can possibly be, building personal confidence and self-esteem as well as delivering top grades.

Our students are at the heart of our highly accessible Wellbeing Team. The team develops their approach from the best emerging research on modern teaching and behavioural psychology. As a result, and in consultation, we have made changes to the college to further improve the way we teach and look after our students. Our new wellbeing strategy has led to many new developments including our new wellbeing hub and introducing two new therapy dogs.

Our students emerge from Andover as confident decision makers with an approach to learning and life which makes them successful in their next steps.

**Ben Stokes,**  
**Vice Principal Andover College (Curriculum)**



# MY PERSONAL PLANNER



To help you make educated choices about your future, we have introduced interactive pages throughout the prospectus. These pages are full of useful information and questions to help you work out your next steps.

## CAREER DREAMS AND GOALS FOR...

Name: \_\_\_\_\_

School: \_\_\_\_\_

My Careers Adviser is: \_\_\_\_\_

### WHAT TYPE OF COURSE DO I WANT TO DO?

**FIND OUT MORE INFO ON PAGE 32.**

- A Level
- Technical and Vocational
- Apprenticeships

### WHAT LEVEL WOULD I LIKE TO TAKE?

**FIND OUT MORE INFO ON PAGE 28.**

- Level 3
- Level 2
- Level 1
- Foundation Studies
- HNC

### WHICH COURSES AM I INTERESTED IN?

- \_\_\_\_\_
- \_\_\_\_\_
- \_\_\_\_\_
- \_\_\_\_\_

### WHAT COLLEGES AM I INTERESTED IN?

- \_\_\_\_\_
- \_\_\_\_\_
- \_\_\_\_\_
- \_\_\_\_\_

### FIRST CHOICE

\_\_\_\_\_

## CAREER DREAMS AND GOALS

**YOU CAN FIND LOTS MORE INFORMATION ABOUT CAREERS ON OUR WEBSITE**

**GO TO [ANDOVER.AC.UK/CAREERS](http://ANDOVER.AC.UK/CAREERS)**

\_\_\_\_\_

\_\_\_\_\_

\_\_\_\_\_

\_\_\_\_\_

\_\_\_\_\_



# STUDENT WELLBEING AND SUPPORT



Wellbeing

Starting college and studying a subject you are passionate about is exciting but it can be daunting too. We know how important it is to stay focused on your studies but recognise that life can get in the way sometimes.

That's why we have a highly experienced Student Wellbeing Team to ensure you are able to cope with any obstacles life throws at you and to offer advice and support. The team includes specialist wellbeing practitioners, counsellors and nurses. The team are dedicated to listening and empowering you to resolve any challenges you might face to enable you to be as successful as possible at college and beyond.

The Wellbeing Team is focused on enabling learners to become increasingly independent learners and individuals, with the resilience to cope with the challenges they face now and in the future.

The Wellbeing Team provide our students with additional support and guidance for any worries or difficulties you have which are affecting your time at college including:

- Emotional health and wellbeing
- Relationships
- Supporting looked after children
- Supporting young carers
- Finance
- Home life
- Alcohol and drugs
- Medical healthcare plans
- Sexual health advice





**OUR SPECIALIST TEAM ARE ALWAYS ON HAND TO HELP AND SUPPORT STUDENTS, IF YOU HAVE ANY CONCERNS OR NEED SUPPORT PLEASE CONTACT [WELLBEINGANDOVER@SPARSHOLT.AC.UK](mailto:WELLBEINGANDOVER@SPARSHOLT.AC.UK) FOR FURTHER DETAILS.**

## WELLBEING HUB – NEW FOR SEPTEMBER 2020!

We are excited to announce the opening of our new Wellbeing Hub for September 2020! This new space includes a new student lounge, mindfulness room, Health Hub, counselling suites, private garden and meeting pods. This will be a safe space which fosters positive wellbeing, personal growth and independent self-help strategies.

## PROGRESS COACHES

You will be allocated your own Progress Coach when you start college. The Progress Coach's sole responsibility is to ensure that you have all the support required to fulfil your full potential. We believe in appointing experts to the role who will liaise with teaching staff and the Wellbeing Team to provide tailored guidance. Your Progress Coach will help you with any issues you have and will provide the coaching you need to succeed. The programme also offers extensive support for both Higher Education, employment and social welfare.

## THERAPY DOGS

We would like to introduce our new therapy dogs, Arlo and Romeo. Scientific studies have proved that they can help students to calm down and relax during difficult times. Researchers have found that students are significantly less stressed and anxious, and even have increased happiness and energy, immediately following spending time in a drop-in session with a dog present.

If you are uncomfortable with dogs, please let a member of staff know.







## WELLBEING TIPS

- Balance studying with other activities you enjoy.
- Accept yourself! Don't compare yourself to others.
- Keep in touch with friends and family.
- Unplug from technology every now and then.
- Talk and share your feelings. It doesn't help keeping them bottled up.
- Make time for rest and keep a good sleeping pattern.
- Reward and treat yourself when good things happen.
- Work at your own pace.
- Find a work routine that works for you.









# ADDITIONAL LEARNING SUPPORT

We have a dedicated Additional Learning Support Team, who want to help you reach your potential.

Our staff work across the college teams, organising and implementing a wide range of support programmes, each tailored to the learner.

## SUPPORT COULD INCLUDE:

- In-class support.
- One-to-one support sessions.
- Study and assignment workshops.
- Access arrangements.
- Assistive technology.

We also work closely with a variety of different partner agencies to ensure the best experience for our students. All students with an EHCP will be allocated a key worker.

**IF YOU WOULD LIKE FURTHER INFORMATION ON  
THE SUPPORT WE CAN OFFER PLEASE CONTACT  
[ALSANDOVER@SPARSHOLT.AC.UK](mailto:ALSANDOVER@SPARSHOLT.AC.UK)**

# COLLEGE LIFE

At Andover, we try to be creative and different. Enrichment gives students an opportunity to broaden their personal development.

We focus on this taking place through the curriculum so that students learn the wider context of their studies and are able to take their learning beyond the classroom. Bringing learning to life – we organise a number of exciting excursions including Disneyland Paris, The Guardian Head office, Washington DC and many more.

We also have chilled spaces with a contemporary feel; The Restaurant and Coffee Bar. There is a wide variety of meals and snacks to choose from at refreshing prices. Being so close to town you can also do a spot of shopping or grab a coffee on your breaks!

## STUDY +

Students are encouraged to take on extracurricular activities to support their education whilst at college. We have introduced many new enrichment activities such as; Film Club, a Political Society, Science Club and Art Club.

Each year, students get creative and find ways to raise a significant amount for a wide variety of charities by putting together different activities. These include bakes sales, quizzes and even climbing the O2.



## CAREERS SUPPORT

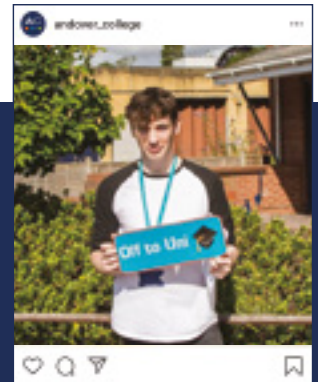
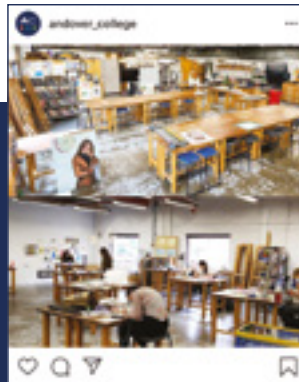
We have recently launched our new Careers Hub in our Andover Sixth Building. The Careers Hub has been set up to provide an open access service and 'one-stop-shop' to the students of Andover College to make sure they know their next steps and are prepared for them once they leave the college, whether this be the world of work or the next stage of education. **Find out more about the careers advice on offer at Andover on page 18.**



# UNIVERSITY PREP PROGRAMME

We know some degree and career pathways are highly challenging and competitive, so Andover College has designed a range of 'University Prep Programmes' to complement your main Study Programme and help you build the skills, experiences and confidence to give you the edge for your university applications and future career progression. We are currently offering this programme in the following areas: Science, Technology, Engineering, Maths, Business, Media Journalism, IT, Education and Law.

**TO FIND OUT MORE, VISIT OUR WEBSITE  
[ANDOVER.AC.UK/UNIVERSITY-PREP-PROGRAMME-UPP](http://ANDOVER.AC.UK/UNIVERSITY-PREP-PROGRAMME-UPP)**



## KEEP SOCIAL

We love to share our students' experiences. So be sure to check out our social media accounts to keep up to date with what we're up to. Don't forget to follow!

 @ANDOVER\_COLLEGE

 @ANDOVERCOLLEGE

 @ANDOVERCOLLEGE

# CAREERS



At Andover College we are serious about preparing students for life after college. We want each student to aim high.

No matter what your goal is – university, apprenticeship or full-time employment, we will support you every step of the way. We do understand that some students are unsure, so we actively encourage exploration through a range of career activities including:

- Uni-Bound – Higher Education Progression event
- Employer and Industry insight talks
- The Great Big Careers Day
- UCAS Trips
- Oxbridge representative talk
- Apprenticeship information sessions

In addition, each student can expect specialist support with:

- The UCAS application process
- Personal statements
- Employability skills
- CV Checks
- Apprenticeship search and application

Students can book an hour long 1:1 appointment with the Careers Advisor or the SUN Progression Mentor. Those with a quick careers query can stop in to the Careers Hub during one of our designated drop-in sessions. There are also online resources available, such as UNIFrog, Pathways and eClips.





## CAREER ROUTES

Have your future career in mind but not sure how to get there?

Maybe you have no idea what you want to do next! Both of these are perfectly okay. There is nothing wrong with having a dream career or goal in mind but it is also okay if you don't have your future mapped out.

**USE OUR INTERACTIVE PATHWAYS TO CAREERS TOOL – GO TO [ANDOVER.AC.UK](https://andover.ac.uk) TO FIND OUT MORE AND EXPLORE ALL THE DIFFERENT CAREER PATHS THAT ARE OUT THERE.**



# CAREER PLANNER



DO I HAVE A CAREER IN MIND?

YES

DO YOU KNOW THE STEPS INVOLVED TO ACHIEVE YOUR GOAL?

YES

THE STEPS ARE:

1

---

---

2

---

---

IS THERE AN ALTERNATIVE PATHWAY:  YES  NO

If yes, what is it:

---

---

NO

IT'S OKAY IF YOU DON'T KNOW THE NEXT STEPS.

Visit [andover.ac.uk/careers](https://andover.ac.uk/careers) to take a look at our pathways tool. This tool can help you work out the next steps to your dream career.

NO

USE THESE QUESTIONS TO HELP GET YOU THINKING ABOUT WHAT CAREER MIGHT INTEREST YOU.

- What topics interest you?
- What subjects do you enjoy?
- What specifically do you enjoy about the subject?
- Do you know any careers which lead on from your favourite subjects?
- What tasks do you enjoy doing?
- What skills would you like to develop?

Visit [andover.ac.uk/careers](https://andover.ac.uk/careers) to take a look at our pathways tool. This tool can help you explore different careers in more details.

COME ALONG TO ONE OF OUR OPEN EVENTS AND SPEAK TO OUR CAREERS TEAM TO HELP YOU GAIN MORE INFORMATION.

Our Open Events might feel a little different this year but we can't wait to greet you in the safest way for us all.

# CAREERS TICK LIST:



Take a look at the statements below and tick which ones you think are relevant to you. These can help you work out what career is right for you.

I THINK QUALIFICATIONS ARE IMPORTANT

---

I THINK I WOULD LIKE TO GET A JOB AFTER COLLEGE

---

I WOULD LIKE TO GO TO UNIVERSITY

---

I DON'T WANT TO GO TO UNIVERSITY

---

I WOULD LIKE A CAREER WITH A TITLE

---

I WOULD LIKE RESPONSIBILITY IN MY FUTURE JOB (I.E. WOULD YOU LIKE TO BE A BOSS?)

---

I WOULD LIKE TO BE A HIGH EARNER

---

I WOULD LIKE A JOB WHERE I HELP PEOPLE/ANIMALS/THE ENVIRONMENT

---

I WOULD LIKE TO MAKE A POSITIVE IMPACT ON THE WORLD

---

I AM REALLY UNSURE!

You can also speak to the careers advisor at your school. Take this list with you as it will give you an idea of what to speak about and what questions to ask.

# OUTSTANDING FACILITIES



## SCIENCE LABORATORIES

Our labs are equipped to industry standard with equipment like an IR spectrometer, specialist dissection tools for A Level Biology dissections, a vortex mixer and Rubens Tube.

## IT SUITES AND GAMES DESIGN CENTRE

Not only are there multiple computer spaces throughout the college for your day-to-day study, we have the latest computer hardware and software to take your technical skills up to the highest level.



## WELLBEING HUB

With a new student lounge, mindfulness room, Health Hub, Counselling suites, a private garden and meeting pods. The Hub is designed as a safe space that fosters positive wellbeing, personal growth and independent self-help strategies.

## MUSIC ACADEMY

Our outstanding department has dedicated facilities including: six rehearsal rooms fitted out with drum kits, amplifiers and microphones, a recital room with a baby grand piano, two studios, industry-standard multimedia suite with Logic Pro X recording software and more!

## CINEMA

We have a 40 seat cinema with surround sound capabilities. It is used for teaching and for students to present their work.



## TECHNOLOGY AND FUTURE SKILLS BUILDING

Our £3.9 million Technology and Future Skills Centre is a modern two storey building which provides industry standard workshops and classrooms for Bricklaying, Motor Vehicle and Electrical and Carpentry courses.

## CAREERS HUB

We have recently launched our new Careers Hub in our Andover Sixth Building. The Careers Hub is a new space containing comprehensive careers support and information.





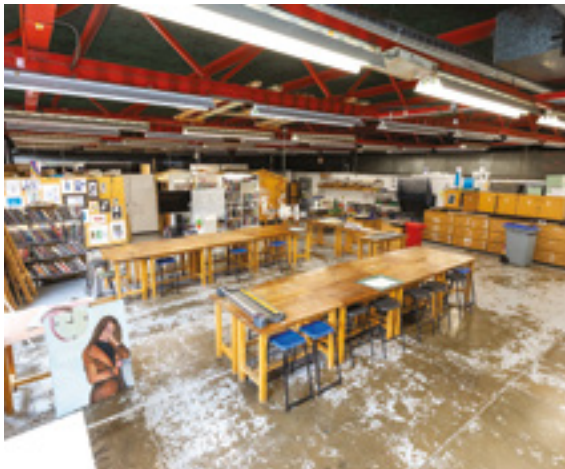
## SPORTS CENTRE AND FOOTBALL STADIUM

Our sports students have access to the brand new Andover Leisure Centre, providing a superb range of sports facilities as well as discounted gym membership.

The football academy is based at the Portway Stadium – home to Andover Town Football Club and linked to the new AFC Bournemouth Second Chance Elite Programme.

## ELEMENTS

Elements is our commercial salon which is available to the public during open client sessions for a wide variety of hairdressing services. We have another salon which is used for teaching hairdressing techniques and for students to practice what they have learned.



## 1803 THEATRE AND DANCE STUDIOS

Our 1803 Theatre is a fully rigged, 100-seat theatre with a retractable seating bank to allow a flexible performance space. The theatre space is able to be divided into two separate rehearsal spaces. The theatre is available to hire outside of teaching hours for performances and theatre and performance groups by contacting [1803theatre@sparsholt.ac.uk](mailto:1803theatre@sparsholt.ac.uk) or visit [andover.ac.uk](http://andover.ac.uk). We also have two specialised dance studios which are home to local dance groups and come complete with dance floors.



## CREATIVE HUB

Within our light and airy suite of art and design studios you can sculpt, draw, paint, design and create 3D ceramics, glass, models and stage sets. The photography suite includes a dark room and the dedicated fashion textile design studio includes cutting tables and sewing machines.

# OPEN EVENTS

Come along to one of our Open Events to see all we have to offer. Speak to expert Lecturers, experienced students and view our incredible facilities.



## COME ALONG AND FIND OUT MORE ABOUT COURSES, CAREERS AND SUPPORT

**TUESDAY**

**29 SEPTEMBER 2020**

4:30 – 7:30pm

**TUESDAY**

**17 NOVEMBER 2020**

4:30 – 7:30pm

**WEDNESDAY**

**28 APRIL 2021**

4:30 – 7:30pm

**WEDNESDAY**

**30 SEPTEMBER 2020**

4:30 – 7:30pm

**THURSDAY**

**11 FEBRUARY 2021**

4:30 – 7:30pm

**THURSDAY**

**24 JUNE 2021**

4:30 – 7:30pm

**We're looking forward to welcoming visitors to campus this year for our Open Events.**

However, we ask you to keep an eye out for updates on our Open Event webpages as well as our social media channels as we may have to change the ways you can experience our campus, teachers and support teams in the months to come due to the ongoing situation and government guidance. Our Open Events might feel a little different this year but we can't wait to greet you in the safest way for us all.



# COLLEGE CHECKLIST

We have put together this helpful college visit checklist so that you can get the most out of the event. Take a copy and use it at all events you attend.



## COLLEGE DETAILS:

Name:

---

Location:

---

Travel time:

---

## COURSES I AM INTERESTED IN:

- ---
- ---
- ---
- ---
- ---

## QUESTIONS I WANT TO ASK:

- ---
- ---
- ---
- ---
- ---

## WHAT I LIKED ABOUT THIS COLLEGE:

---

---

---

---

---

## WHAT I DIDN'T LIKE ABOUT THIS COLLEGE:

---

---

---

---

---

OVERALL SCORE:

/ 10

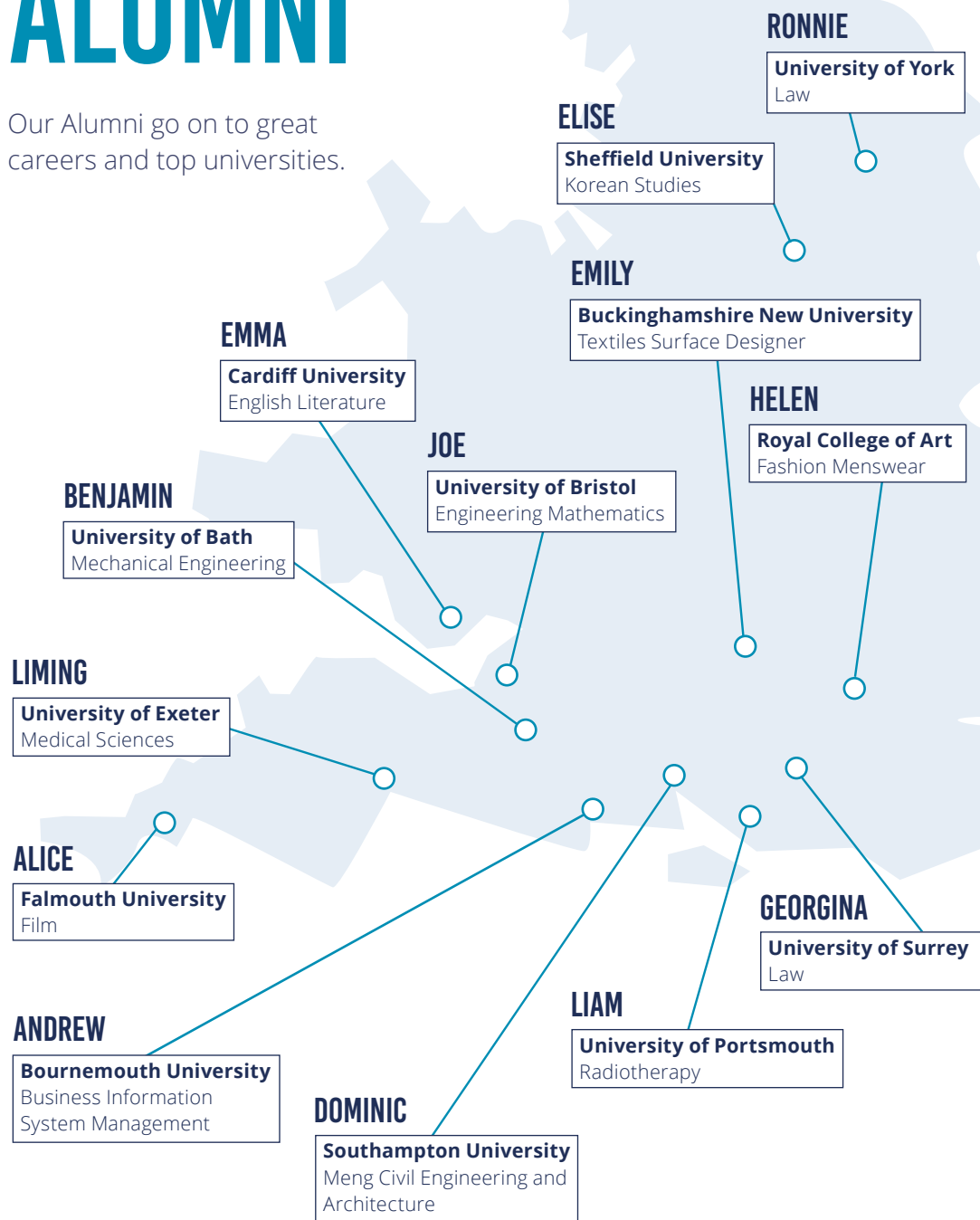
NEXT STEPS:

---

---

# ANDOVER ALUMNI

Our Alumni go on to great careers and top universities.





andover\_college



2,020 likes

andover\_college What a year!  
#classof2020 #andovercollege #youcandoanything

# CHOOSING THE RIGHT LEVEL FOR YOU



The range of qualifications can be confusing. Here we explain what each level means. Some courses will have specific entry requirements so make sure you check before applying.

## LEVEL 3

### 1 – 2 YEAR COURSE

**Qualifications:** A Levels and BTECs.

**Entry requirements:** Five GCSEs at grade 4/5 or above, including English and Maths, or a Level 2 BTEC at pass or above.

**Could lead to:** University, an apprenticeship or employment.

## LEVEL 2

### 1 YEAR COURSE

**Qualifications:** Diploma, BTEC First Awards and GCSEs.

**Entry requirements:** Four GCSEs at grade 3 or above or a Level 1 qualification. English and Maths at grade 3 or above.

**Could lead to:** Employment, a Level 3 course or apprenticeship.

## LEVEL 1

### 1 YEAR COURSE

**Qualifications:** Diploma.

**Entry requirements:** GCSEs at grade 2–1 or an Entry Level 3 course.

**Could lead to:** Employment, a Level 2 course or apprenticeship.

## FOUNDATION STUDIES PROGRAMME

These are specialist programmes designed for students aged 16–24 with special educational needs (SEN) who respond best within a smaller group and may require extra support or time to complete set work within a mainstream environment. **Find out more on page 36.**

## STAY NEAR – GO FAR! UNIVERSITY LEVEL COURSES ON YOUR DOORSTEP

HNCs are a great way to start on the degree level route without having to commit to the full three or four years. They are undergraduate qualifications but take less time and were created to prepare you for specific careers. **Find out more on page 42.**





# GUIDE TO BTEC QUALIFICATIONS

BTEC qualifications are equivalent to A Levels and they carry UCAS points, meaning they can still take you to University if you wish.

There are different types of BTEC qualifications and they are all equivalent to a different number of A Levels. We know this can be confusing so we have put together a 'cheat sheet' to help make it simpler!

All BTEC qualifications will have (BTEC) in the course description.

If you are still unsure about which course to apply for then come along to an Open Event or email [infoforegroundover@sparsholt.ac.uk](mailto:infoforegroundover@sparsholt.ac.uk) and we will happily explain and ensure that you are put on the right course for you.

QUALIFICATION	EQUIVALENT
First Award	GCSE Level
National Certificate	1 AS Level
National Extended Certificate National Subsidiary Diploma	1 A Level
National Foundation Diploma 90 Credit Diploma	1½ A Levels
National Diploma	2 A Levels
National Extended Diploma	3 A Levels







## UCAS POINTS

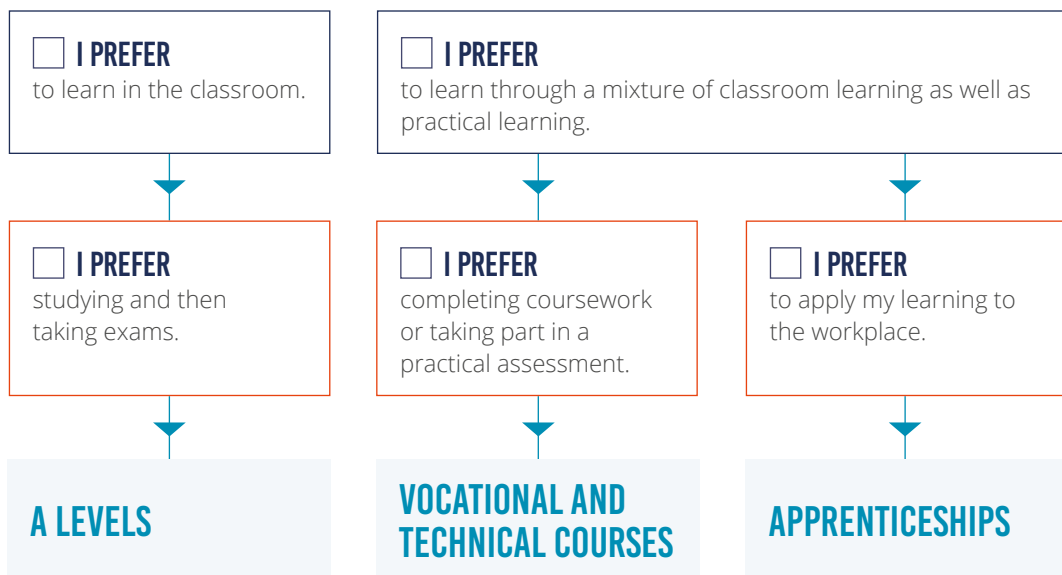
To go to University, you need UCAS points. Achieved grades are equivalent to different UCAS points, see the chart below to work out what you need to go to University.

DIPLOMAS	A LEVEL	UCAS
D*	A*	56
D	A	48
-	B	40
M	C	32
-	D	24
P	E	16

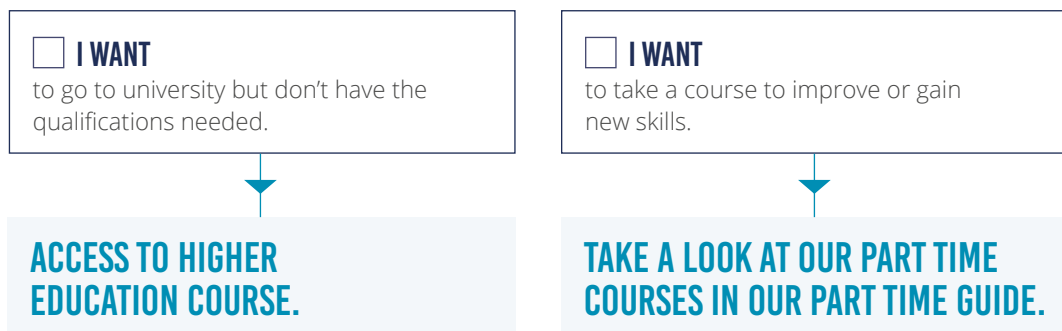
# THE CHOICE IS YOURS

Andover College offers the widest choice of courses in the region. With over 40 A Level or equivalent courses, over 70 vocational courses and 19 Apprenticeship Standards – there is an option for everyone. Take a look at the flow chart below and see what course is right for you!

## I AM A SCHOOL LEAVER...



## I AM 19+...



# COLLEGE APPLICATION CHECKLIST



We have put together a checklist, which includes all of the steps you will need to complete before starting college in September!

## RESEARCH COURSES AND COLLEGES

Make sure to research multiple colleges and courses and see what options are out there.

---

## VISIT OPEN EVENTS

Visit Open Events for all colleges you are interested in. Open Events give you a chance to get a real feel for the college.

---

## APPLY

Apply online through our website: [andover.ac.uk/apply](https://andover.ac.uk/apply)

---

## INTERVIEW

Once we have received your application, we will consider your application and send you an invitation for an interview or an offer.

---

## RECEIVE OFFER

Once we have taken a look through your application and interview, we will send you an offer which you will then accept or decline.

---

## APPLY FOR TRAVEL AND FINANCE (IF NEEDED)

We will send our online registration forms for you to fill out, once you have accepted your offer. This is when you will be able to apply for travel passes and finance. Find out more on page 126.

---

## APPLICANT WELCOME DAYS

In the summer term, we will invite you in to experience the courses you have applied for and make sure they are right for you.

---

## RESULTS DAY

We wish you the best of luck. No matter what your results are, come and speak to us as we will be able to find the right courses and fit for you.

---

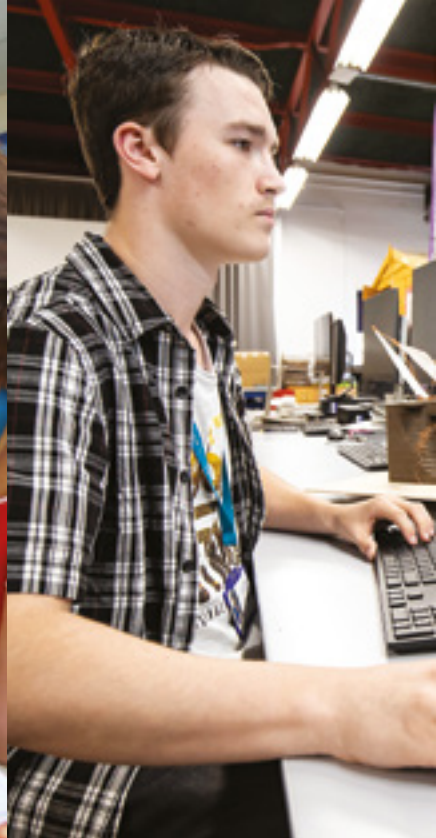
## ENROLMENT

Once you have your results, we will invite you in to come and enrol onto your chosen courses.

---

## START COLLEGE

Be ready to start your next stage of education with us in September.



# T LEVELS ARE COMING...

From September 2022, the college has been selected to deliver T Levels in a range of subjects including: Digital, Construction and Health and Science.

T Levels are a new, two year qualification. They have been developed in collaboration with employers and providers to meet the needs of industry and to prepare students for work.

## WHO ARE THEY FOR?

Students aged 16–19, who want to gain valuable experience in the workplace whilst gaining a new qualification. They are a new technical qualification which is equivalent to either three A Levels or a full-time BTEC programme.

## WHAT'S INCLUDED?

When taking a T Level qualification, you will spend 80% of your time in the classroom and the other 20% in an industry placement. Through this you will learn the skills needed in your chosen industry and then be able to put those skills into practice. You will spend at least 45 days, each year of the course, in your industry placement, giving you valuable experience to help you stand out against the rest.





## WHAT QUALIFICATION WILL I ACHIEVE?

T Levels are nationally recognised by universities and employers. They also hold UCAS points as they are equivalent to three A Levels.

## INDUSTRY WORK PLACEMENTS

Our Industry Work Placement Team have strong links with employers in many different industries and their purpose is to help and support students during a work placement. They will work closely with T Level students to help them find the perfect industry placement for them.

**FIND OUT MORE ABOUT INDUSTRY WORK PLACEMENTS AT [ANDOVER.AC.UK](https://andover.ac.uk) OR MEET THE TEAM AT OPEN EVENTS.**



# FOUNDATION LEARNING



These are specialist programmes designed for students aged 16–24 with special educational needs (SEN) who respond best within a smaller group and may require extra support or time to complete set work within a mainstream environment.

Students may have attended a school for those with SEN, have an Education, Health and Care Plan, had learning support at school, or not achieved the grades to move to a vocational Level 1 programme.



# GCSEs

Add GCSEs to your programme to boost your overall portfolio of studies and improve your career prospects.

Study either alongside your full-time course or as part of a Level 2 study programme and gain the qualifications employers, colleges and universities value.

Our specialist lecturers will help you to extend your learning with GCSEs and other Level 2 qualifications and then progress on to Level 3 courses if you so wish.

If you have not yet achieved a grade 4 in GCSE Maths and English, then you will be required to take it at college. Find out more on our website [andover.ac.uk](http://andover.ac.uk)

## SUBJECTS WE OFFER GCSEs IN:

<input type="checkbox"/> ENGLISH LANGUAGE	PAGE 76
<input type="checkbox"/> GRAPHIC DESIGN	PAGE 68
<input type="checkbox"/> MATHS – FOUNDATION OR HIGHER TIER	PAGE 96
<input type="checkbox"/> PHOTOGRAPHY	PAGE 69
<input type="checkbox"/> SCIENCE	PAGE 116

**YOU CAN ALSO TAKE LEVEL 2 ART AND DESIGN, CRIMINOLOGY, IT AND PSYCHOLOGY ALONGSIDE THESE COURSES.**







# A LEVELS

Our dedicated Sixth Form Centre offers an extensive range of subjects at A Level, including the Extended Project Qualification, providing excellent preparation for university.

Our students' consistently high academic results take them on to study at top universities all over the UK. Students are also able to combine A Levels with our extensive range of other qualifications such as BTECs and Diplomas.

Ofsted rated all of our teaching Good or Outstanding and our talented teachers will work with you to unlock and develop your talent and potential. Our commitment to smaller class sizes means you get more personalised support, while our University Preparation Programme (UPP) provides all students with support in preparing them for competitive degrees and careers. Working with industry and universities, students are given access to a range of activities, speakers and resources that will help them make an informed decision about their future ambitions and set them apart from their peers.

We add value at Andover College. We are regularly placed within the top 5% of Government performance figures in the country for Value Added for A Level programmes. Value added is a powerful indicator of the quality of a college's teaching and learning and the importance we place on individual student progress.

**YOU CAN COMBINE OUR A LEVEL COURSES WITH AN EXTENSIVE RANGE OF OTHER QUALIFICATIONS, INCLUDING; CRIMINOLOGY, FINANCIAL STUDIES, SPORT AND MANY MORE.**

## SUBJECTS WE OFFER A LEVELS IN:

<input type="checkbox"/> BUSINESS	PAGE 52
<input type="checkbox"/> CREATIVE ARTS	PAGE 62
<input type="checkbox"/> DESIGN	PAGE 68
<input type="checkbox"/> ENGLISH	PAGE 76
<input type="checkbox"/> EXTENDED PROJECT QUALIFICATION	PAGE 78
<input type="checkbox"/> FILM AND MEDIA STUDIES	PAGE 80
<input type="checkbox"/> GEOGRAPHY AND ENVIRONMENTAL STUDIES	PAGE 84
<input type="checkbox"/> HISTORY AND POLITICS	PAGE 92
<input type="checkbox"/> LAW	PAGE 94
<input type="checkbox"/> MATHS	PAGE 96
<input type="checkbox"/> PHILOSOPHY, RELIGION AND ETHICS	PAGE 110
<input type="checkbox"/> PSYCHOLOGY AND SOCIOLOGY	PAGE 114
<input type="checkbox"/> SCIENCE	PAGE 116





# HIGHER NATIONAL CERTIFICATE (HNC)

## STAY NEAR – GO FAR! UNIVERSITY LEVEL COURSES ON YOUR DOORSTEP

HNCs are a great way to start on the degree level route without having to commit to the full three or four years. They are undergraduate qualifications but take less time and were created to prepare you for specific careers. We offer them in our specialisms, which ensures consistency and quality of teaching and learning. The benefit is that you can then go on to complete a full degree, or are ready to go straight into industry.

## WHAT'S AN HNC?

A Higher National Certificate (HNC) takes one year to complete and is the equivalent of the first year at university – a Level 4 qualification. HNCs are vocationally focused and can lead straight on to a career. They're a great stepping stone up to a higher qualification, as you can choose to 'top up' to an HND or HNC with extra studies at a later date, in order to convert it to a full bachelor's degree.

Many of our students stay with us to study an HNC and spend an extra year gaining in confidence as well as developing academic and practical skills. They're then ready for their next step into a full degree or to enter the world of work with a serious advantage.

## SUBJECTS WE OFFER HNCs IN:

- |  |          |
|--|----------|
| <input type="checkbox"/> DIGITAL ARTS AND TECHNOLOGY | PAGE 73  |
| <input type="checkbox"/> PERFORMING ARTS             | PAGE 108 |
| <input type="checkbox"/> SPORT AND EXERCISE SCIENCE  | PAGE 122 |





# APPRENTICESHIPS

An Apprenticeship is a training programme designed to develop job-related skills, knowledge and competencies in a particular professional area.

With a guaranteed salary, real experience and a nationally-recognised qualification, what more could you want? Through a combination of on-the-job training and college study, you will be career ready.

Sparsholt and Andover College work with over 1,100 employers across more than 40 different industries.

Apprenticeship standards are employer-led and outline the skills, knowledge and behaviours required to carry out a certain job role. All apprentices must take an independent assessment at the end of their training to assess their ability and competence in their job role. Before you start your Apprenticeship you will need to find employment and you can go about this in a number of ways:

- Speak to our dedicated team who have excellent links with local and national companies.
- Visit the Apprenticeships website [www.apprenticeships.gov.uk](http://www.apprenticeships.gov.uk) to find a vacancy.
- Contact local companies and see if they are hiring and willing to take on an Apprentice.

Once you are employed and registered on an Apprenticeship programme your training will be arranged at the college, and at your place of work. The college will also ensure that you have sound English and Maths qualifications to accompany the Apprenticeship.

For more information on our Apprenticeships, please visit [andover.ac.uk/apprenticeships](http://andover.ac.uk/apprenticeships)

## SUBJECTS WE OFFER APPRENTICESHIPS IN:

- ACCOUNTS/FINANCE ASSISTANT STANDARD LEVEL 2
- ASSISTANT ACCOUNTANT STANDARD LEVEL 3
- PROFESSIONAL ACCOUNTING/TAXATION TECHNICIAN STANDARD LEVEL 4
- AUTOCARE TECHNICIAN STANDARD LEVEL 2
- MOTOR VEHICLE SERVICE AND MAINTENANCE TECHNICIAN (LIGHT VEHICLE) STANDARD LEVEL 3
- BRICKLAYING STANDARD LEVEL 2
- CARPENTRY AND JOINERY STANDARD LEVEL 2
- CUSTOMER SERVICE PRACTITIONER STANDARD LEVEL 2
- BUSINESS ADMINISTRATOR STANDARD LEVEL 3
- TEAM LEADER/SUPERVISOR STANDARD LEVEL 3
- EARLY YEARS PRACTITIONER STANDARD LEVEL 2
- EARLY YEARS EDUCATOR STANDARD LEVEL 3
- HAIR PROFESSIONAL STANDARD LEVEL 2
- ADVANCED AND CREATIVE HAIR PROFESSIONAL STANDARD LEVEL 3
- LEAD ADULT CARE WORKER STANDARD LEVEL 3
- LEADER IN ADULT CARE STANDARD LEVEL 5
- INSTALLATION ELECTRICIAN/MAINTENANCE ELECTRICIAN STANDARD LEVEL 3
- TEACHING ASSISTANT STANDARD LEVEL 3



WE ALSO OFFER LAND BASED APPRENTICESHIPS AT OUR SPARSHOLT CAMPUS. FOR MORE INFORMATION ON LAND BASED APPRENTICESHIPS, PLEASE VISIT SPARSHOLT.AC.UK

**SPARSHOLT**  
COLLEGE HAMPSHIRE

**FIRE  
IT UP**  
Apprenticeships



**FOR CURRENT APPRENTICESHIP VACANCIES,  
VISIT THE APPRENTICESHIPS WEBSITE AT  
[WWW.APPRENTICESHIPS.GOV.UK](http://WWW.APPRENTICESHIPS.GOV.UK) OR FOR MORE DETAILS  
CONTACT THE APPRENTICESHIPS TEAM ON 0845 850 0916  
OR EMAIL [APPRENTICESHIPS@SPARSHOLT.AC.UK](mailto:APPRENTICESHIPS@SPARSHOLT.AC.UK)**

# ACCESS TO HIGHER EDUCATION



These one year courses are specifically designed to give you the foundation skills and knowledge to go on and study a degree. The diploma provides an intensive programme covering study skills and knowledge required for chosen career paths, and delivers a qualification recognised by universities.

## NURSING AND HEALTHCARE

---

### ACCESS TO HIGHER EDUCATION DIPLOMA • LEVEL 3

You will cover a wide range of topics which cover anatomy and physiology, psychology, nutrition and digestion and health studies.

### ENTRY REQUIREMENTS

A Level 2 qualification in English.

### WHAT NEXT

A nursing and healthcare related degree and careers in midwifery, nursing, occupational therapy, physiotherapy, sports science, counselling.

## SCIENCE

---

### ACCESS TO HIGHER EDUCATION DIPLOMA • LEVEL 3

The Science pathway covers all three disciplines; biology, chemistry and physics. The units cover a range of core topics which develop knowledge and understanding.

### ENTRY REQUIREMENTS

Grade 5–4 or C in Level 2 English and Maths.

### WHAT NEXT

Degrees in Sciences, Marine Biology, Biomedical Science, Forensic Science or degrees that require a significant proportion of science knowledge.

## SOCIAL SCIENCES

---

### ACCESS TO HIGHER EDUCATION DIPLOMA • LEVEL 3

This Access pathway focuses on core units within the realms of sociology and psychology including psychopathology, perspectives in psychology, sociology of education and sociology of family.

### ENTRY REQUIREMENTS

A Level 2 qualification in English.

### WHAT NEXT

Psychology related degrees in Forensic Psychology, Abuse and Crime Studies, Criminology, Social Sciences and Law.

## SOCIAL WORK

---

### ACCESS TO HIGHER EDUCATION DIPLOMA • LEVEL 3

Students studying this pathway cover units that enable them to understand the challenges faced by those living in a community suffering social deprivation.

### ENTRY REQUIREMENTS

A Level 2 qualification in English.

### WHAT NEXT

Degrees in Social Work, Youth Work, Criminology, Psychology, Mental Health Nursing and Care Management.

### NOTES:

---



---



---



---



---



---



---

# ACCOUNTING



Every business will need to prepare accounts whether it be for a sole trader, partnership or limited company. The skills that you will learn in this area would be useful if you are interested in starting your own business or whether you would like to work in a financial capacity.

## AAT

### FOUNDATION CERTIFICATE/ADVANCED DIPLOMA • LEVEL 2/3

You will explore many aspects of accounting including preparation of final accounts for sole-traders, partnerships, limited and manufacturing companies.

### ENTRY REQUIREMENTS

Five GCSEs at grade 9–4, including English Language and a minimum Level 5 in Maths. BTEC Level 2 qualifications considered in subject related courses.

### WHAT NEXT

AAT is widely sought after by employers and in Higher Education. Careers paths include; Finance Manager, Chartered Accountant or a Director within the Accounting industry.





**“THE COURSES TAUGHT ME VALUABLE INFORMATION THAT I HAVE CARRIED INTO MY JOB IN ACCOUNTANCY BUT IT HAS ALSO GIVEN ME THE EXPERIENCE OF WORKING IN A TEAM WITH NEW PEOPLE AND UNDERSTANDING HOW OTHERS WORK AND HOW WE CAN BENEFIT EACH OTHER AS A TEAM.”**

Adam, AAT, Business and Financial Studies

# BRICKLAYING



You will learn about the different types of drawings used in Construction and how to communicate on site. You will gain a general knowledge of construction as well as looking at the impact construction has on the environment and techniques used to counter balance it.



# BUSINESS AND MARKETING



Business explores the key themes relating to building a successful business. Business courses include a variety of topics: Decision making tools, the psychology of marketing, Finance and accounting, Ethics and International trade.

## BUSINESS

**A LEVEL**

### A LEVEL • LEVEL 3

Students will cover the core fundamentals of business; Internal and external influences that can affect a business and its operations. They will apply their knowledge and understanding from this to a global context.

### ENTRY REQUIREMENTS

Five GCSEs at grade 9–4, including English Language and a minimum grade 5 in Maths. BTEC Level 2 qualifications considered in subject related courses.

### WHAT NEXT

These desirable skills enable students to become highly skilled, work-ready individuals with a bright future in any business environment or setting, such as an apprenticeship, Higher Education or into employment.





## NATIONAL CERTIFICATE/NATIONAL EXTENDED CERTIFICATE • LEVEL 3 (BTEC)

The Certificate offers an introduction to a vocational sector through applied learning of topics such as Marketing, Legal Structures and importance of Enterprise within an economy.

### ENTRY REQUIREMENTS

Five GCSEs at grade 9–4, including Maths and English Language. BTEC Level 2 qualifications considered in subject related courses.

### WHAT NEXT

These desirable skills enable students to become highly skilled, work-ready individuals with a bright future in any business environment or setting, such as an apprenticeship, Higher Education or into employment.

## MARKETING (NEW FOR 2021!)



## NATIONAL FOUNDATION DIPLOMA/NATIONAL EXTENDED DIPLOMA • LEVEL 3 (BTEC)

This course will give learners an insight in to event management, marketing and entrepreneurial skills so that they are well positioned to have a successful role in the business sector.

### ENTRY REQUIREMENTS

Five GCSEs at grade 9–4, including English and Maths.

### WHAT NEXT

The qualification will allow progression on to higher levels of study or direct employment in to industry.



### UCAS TARIFF POINTS AVAILABLE

BTEC qualifications are equivalent to A Levels and they carry UCAS points. Find out more on page 30.

### NOTES:

---

---

---

---

---

---

---

---

---

---

# CARPENTRY AND JOINERY



Carpentry and Joinery will give you an introduction to Carpentry within the Construction industry. You will be able to improve your hand skills to produce various woodworking joints before moving towards site structural work such as fixing Architraves, Skirting and Door linings. In Level 2 you can specialise in Site Carpentry or Architectural Joinery.

## CONSTRUCTION SKILLS (CARPENTRY AND JOINERY)

---

### DIPLOMA • LEVEL 1

You will learn how to carry out basic carpentry including woodworking joints and the use of hand and power tools. You will learn about the importance of safe working practices.

### ENTRY REQUIREMENTS

GCSEs at grade 2/3 (plus a favourable report from school).

### WHAT NEXT

Level 2 Apprenticeship in Site Carpentry or Bench Joiner or straight into employment.

# SITE CARPENTRY

## TECHNICAL CERTIFICATE • LEVEL 2

This is a more advanced programme which will develop your trade skills to a recognised industry standard. We have two workshops, with individual workstations/benches for you to develop your practical skills.

## ENTRY REQUIREMENTS

Completion of a Level 1 Diploma in Carpentry and Joinery, or an equivalent qualification. GCSEs at grade 3 or above (including Maths or Functional Skills in English and Maths at Level 1).

## WHAT NEXT

Fast-track to Level 3 Apprenticeship in Site Carpentry or Bench Joinery or straight into employment.

# ARCHITECTURAL JOINERY (NEW FOR 2021!)

## TECHNICAL CERTIFICATE • LEVEL 2

This is a more advanced programme which will develop your trade skills to a recognised industry standard. You will learn how to carry out basic carpentry including woodworking joints and the use of hand and power tools. You will learn about the importance of safe working practices.

## ENTRY REQUIREMENTS

Completion of a Level 1 Diploma in Carpentry and Joinery, or an equivalent qualification. GCSEs at grade 3 or above (including Maths or Functional Skills in English and Maths at Level 1).

## WHAT NEXT

Fast-track to Level 3 Apprenticeship in Site Carpentry or Bench Joinery or straight into employment.

## NOTES:

---



---



---



---



---



---



---



---



---



---



---



---



---



---



---



---

# CHILD CARE AND EARLY YEARS



Our childcare and early years' courses explore the concept of child development, through both the child and the role of the practitioner whilst developing the necessary skills needed to work with children through placement settings. With work placements forming a vital part of our Level 2 and Level 3 early years programmes you can be reassured to know that this is all taken care of by us.

## EARLY YEARS – CARING FOR CHILDREN

---

### CACHE DIPLOMA • LEVEL 1

This course offers you an introduction into understanding the care and development needed to help a child grow and learn.

### ENTRY REQUIREMENTS

Three GCSEs at grade 1 or above, including English and Maths.

### WHAT NEXT

Progression on to CACHE Level 2 Diploma for the Early Years Practitioner.



# EARLY YEARS PRACTITIONER

---

## CACHE DIPLOMA • LEVEL 2

This course will suit those interested in working with children. Work experience is a key element to the course, and you will have the opportunity to work in a pre-school, school or day nursery allowing you to put the theory into practice.

## ENTRY REQUIREMENTS

Four GCSEs at grade 3 or above, including English and Maths.

## WHAT NEXT

Progression on to Level 3 Early Years course or Apprenticeship.

# CHILDCARE AND EDUCATION (EARLY YEARS EDUCATOR)

---

## TECHNICAL DIPLOMA • LEVEL 3

This course will suit those interested in becoming Early Years Educators and develops your skills in working with children through placement settings, in age ranges from 0–7 years.

## ENTRY REQUIREMENTS

Five GCSE's at grade 4 or above, including English and Maths and Science.

## WHAT NEXT

A career in the early year's sector or related university courses.

### NOTES:

---



---



---



---



---



---



---



---



---



---



---



---



---



---



---



---



---



---



---



---



---



---

# COMPUTING AND GAMES DESIGN



Whether you are a school leaver, an employer, or someone looking to pursue your professional career in computing and creative technology, we have the expertise in helping you to develop industry standard skills

## INFORMATION CREATIVE TECHNOLOGY



### FIRST AWARD • LEVEL 2 (BTEC)

This course is perfect if you have a strong interest in pursuing a career in the IT sector. The course is designed to inspire and enthuse learners to be producers of technology products and systems rather than just be consumers of them.

### ENTRY REQUIREMENTS

Four GCSEs at grade 3 or above, including English and Maths.

### WHAT NEXT

Successful completion of the programme makes a Level 3 qualification a natural route of progression. You could also explore related apprenticeships or look to start your career.



## ESPORTS (NEW FOR 2021!)



### NATIONAL EXTENDED CERTIFICATE/NATIONAL DIPLOMA • LEVEL 3 (BTEC)

The course covers a wide range of units including Esports skills, strategies and analysis, enterprise and entrepreneurship, games design and Esports Law and Legislation.

### ENTRY REQUIREMENTS

Five GCSEs at grade 9–4, including Maths and English.

### WHAT NEXT

Due to the rapid growth of the industry, employment opportunities are expanding.

## DIGITAL GAMES PRODUCTION (NEW FOR 2021!)



### NATIONAL EXTENDED CERTIFICATE/NATIONAL DIPLOMA • LEVEL 3 (BTEC)

This course is designed to provide a technical introduction to digital games production. Learners develop skills in areas such as Concept Art, 2D Animation, and 3D Modelling.

### ENTRY REQUIREMENTS

Five GCSEs at grade 9–4, including English, Maths and Science.

### WHAT NEXT

The qualification carries UCAS points and is recognised by Higher Education providers. It will also prepare learners for employment in the Games industry.



### UCAS TARIFF POINTS AVAILABLE

BTEC qualifications are equivalent to A Levels and they carry UCAS points. Find out more on page 30.

### NOTES:

---



---



---



---



---



---



---



---



---



---



---



---



---



---



---



---





**“ THE COMPUTER FACILITIES, LIBRARIES, AND TEACHING RESOURCES ARE EXCELLENT. RELEVANT HOMEWORK TASKS WERE SET REGULARLY WHICH ENCOURAGE YOU TO EXPLORE THE SUBJECT OUTSIDE OF COLLEGE. THE LECTURERS WERE ALWAYS FRIENDLY AND READY TO HELP.”**

Paul: Maths, Physics and Computer Science

# CREATIVE ARTS



Join our outstanding design hub and be as creative as you want to be! In our fantastic art and design studios you can really experiment with new techniques and materials. Sculpt, draw, paint, design and create anything from 3D ceramics, glass, models and textiles to stage sets

## ART AND DESIGN



### FIRST AWARD • LEVEL 2 (BTEC)

This course will introduce you to a variety of creative skills to explore and develop across a broad range of art and design subjects.

### ENTRY REQUIREMENTS

Four GCSEs at grade 3.

### WHAT NEXT

You will be able to progress on to our Level 3 or A Level Art and Design subjects. Also, there are opportunities available for apprenticeships in the creative sector.



## NATIONAL FOUNDATION DIPLOMA/NATIONAL DIPLOMA/NATIONAL EXTENDED DIPLOMA • LEVEL 3 (BTEC)

This course is ideal for students who want to study art and design full-time to explore the range of specialist practices within the creative art and craft industries and clarify their career aspirations.

### ENTRY REQUIREMENTS

Five GCSEs at grade 9–4, including a grade 4 or above in English, Maths and a creative subject.

### WHAT NEXT

This course is specifically designed to enable the student to develop a portfolio to seek either work or to progress to university.

## FINE ART

**A LEVEL**

### A LEVEL • LEVEL 3

This subject will give you the opportunity to explore new approaches to Fine Art through the traditional methods of painting, drawing and printmaking.

### ENTRY REQUIREMENTS

Five GCSEs at grade 9–4, including English and a creative subject.

### WHAT NEXT

Fine Art can be continued at Higher Education and offers various career paths. You may also wish to progress on to a pre-degree Foundation Diploma in Art and Design offered at Andover College.

## ART AND DESIGN

### NATIONAL FOUNDATION DIPLOMA • LEVEL 3/4

If you are visually innovative and take risks with your creativity, then FAD could be for you. It may be to extend and develop skills in order to get the creative career you want, or to spend a year exploring and appreciating the visual arts and learning new skills.

### ENTRY REQUIREMENTS

You must be at least 18. Minimum of one A Level or Level 3 BTEC, an art or design content is preferable.

### WHAT NEXT

The course could lead to several creative industries or apprenticeships. It is also the ideal bridge between college and university study.



### UCAS TARIFF POINTS AVAILABLE

BTEC qualifications are equivalent to A Levels and they carry UCAS points. Find out more on page 30.

# CRIMINOLOGY

Criminology is the scientific study of crime and criminals, incorporating a range of different subjects including Psychology, Sociology, Law and Forensic Science. The subject covers a variety of aspects related to crime from the causes of the crime to the processes involved in criminal investigations such as forensics and offender profiling.

## CRIMINOLOGY

---

### CERTIFICATE • LEVEL 2

This course introduces you to the different types of crime and possible explanations as to why some people commit crime including biological, psychological and sociological theories.

### ENTRY REQUIREMENTS

Five GCSEs at grade 9–3, including English Language.

### WHAT NEXT

This course provides opportunities to continue studying in further education at Level 3 including Criminology.

## CRIMINOLOGY

---

### CERTIFICATE/DIPLOMA • LEVEL 3

During the course, you will study the psychology of crime as well as analysing how the media reports crime. You will also investigate the techniques used in the investigation of a crime and the effectiveness of different strategies used to reduce criminality.

### ENTRY REQUIREMENTS

Five GCSEs at grade 9–4, including Maths and a minimum grade 5 in English Language. BTEC Level 2 qualifications considered in subject related courses.

### WHAT NEXT

Studying criminology alongside other Level 3 subjects can provide entry into Higher Education.

## NEW FOR 2021!

Forensic and Criminal Investigation, page 118.





**“ SINCE STUDYING AT THE COLLEGE I HAVE BECOME INDEPENDENT AND CONFIDENT. THIS IS ALL DOWN TO HOW CARING AND SUPPORTIVE THE TEACHERS ARE, ESPECIALLY ABOUT YOUR MENTAL HEALTH AS WELL AS YOUR WORK.”**

Hattie: Law, Criminology and Psychology

# DANCE



Dance at Andover College is known for its diverse variety of styles and professional workshops. The dancers learn and choreograph routines throughout the year for two dance shows, other local events, competitions and also take part in the Christmas Pantomime and end of year Musical. We train each dancer through a range of technique and flexibility classes and also work towards audition preparation for Higher Education or work within the Performing Arts industry.

# DANCE



## NATIONAL CERTIFICATE/NATIONAL EXTENDED CERTIFICATE • LEVEL 3 (BTEC)

This course covers choreography, performance and theory. You will study the principles used to create dance choreography as well as developing performance skills and dance technique. You will also watch, analyse and critique dance work as well as learning to understand the human body anatomically.

## ENTRY REQUIREMENTS

Five GCSEs at grade 9–4.

## WHAT NEXT

University or Dance School to achieve a BA (Hons) Degree in Dance or Performing Arts or there are various career routes.

# DANCE



## NATIONAL FOUNDATION DIPLOMA/NATIONAL EXTENDED DIPLOMA • LEVEL 3 (BTEC)

This full-time dance course will enable those who are truly passionate about dance to train in numerous styles and techniques, exploring a range of stimuli and studying choreographic principles.

## ENTRY REQUIREMENTS

Five GCSEs at grade 9–4 and a successful audition.

## WHAT NEXT

University or Dance School to achieve a BA (Hons) Degree in Dance or Performing Arts or there are various career routes.



### UCAS TARIFF POINTS AVAILABLE

BTEC qualifications are equivalent to A Levels and they carry UCAS points. Find out more on page 30.

### NOTES:

---

---

---

---

---

---

---

---

---

---



# DESIGN



Whether you are a school leaver, an employer, or someone looking to pursue your professional career in Design, we have the expertise in helping you to develop industry skills. You will join our outstanding design hub and be as creative as you want to be! In our fantastic art and design studios you can really experiment with new techniques.

## GRAPHIC DESIGN

**GCSE**

### GCSE • LEVEL 2

Graphic Design is a creative area that uses words and visual images to convey ideas and information. This course covers drawing, collage, mixed media and computer manipulation.

### ENTRY REQUIREMENTS

Four GCSEs at grade 9–3.

### WHAT NEXT

This course can support progression on to Level 3 study such as A Level Graphic Design and BTEC Level 3 in Art and Design. The skills learnt through the course can support entry in to related careers such as advertising and marketing.



## GCSE • LEVEL 2

This GCSE offers a one-year introduction to photography including both digital and darkroom practice. You will explore, experiment, express and communicate through various lens media such as video, photocopier, digital reproduction and replication.

## ENTRY REQUIREMENTS

Four GCSEs at grade 9–3.

## WHAT NEXT

This course can support progression on to Level 3 study such as A Level Photography and BTEC Level 3 in Art and Design and Creative Media. The skills learnt through the course can support entry in to related careers such as advertising and marketing.

# 3D DESIGN

**A LEVEL**

## A LEVEL • LEVEL 3

This subject introduces you to a wide range of makers and designers. You will carry out research and analysis of works related to 3D Design.

## ENTRY REQUIREMENTS

Five GCSEs at grade 9–4, including English and a creative subject. BTEC Level 2 qualifications considered in subject related courses.

## WHAT NEXT

3D Design can lend itself to many different career path. You may also wish to progress on to a pre-degree Foundation Diploma in Art and Design offered at Andover College.

# ANIMATION

**A LEVEL**

## A LEVEL • LEVEL 3

This course combines both artistic and creative components of animation with the required practical and technical skills. It will develop your visual storytelling, character development and editing skills.

## ENTRY REQUIREMENTS

Five GCSEs at grade 9–4, including English and a creative subject. BTEC Level 2 qualifications considered in subject related courses.

## WHAT NEXT

This course will give you a good base for a variety of courses in Higher Education or Apprenticeships.

# FASHION, TEXTILE SURFACE PATTERN AND CONSTRUCTION FOR FASHION AND INTERIORS

**A LEVEL**

## A LEVEL • LEVEL 3

You will develop skills in a broad range of textile, fashion and craft based processes and technologies within a functional or decorative context.

## ENTRY REQUIREMENTS

Five GCSEs at grade 9–4, including English and a creative subject. BTEC Level 2 qualifications considered in subject related courses.

## WHAT NEXT

Fashion and textile design can lead to various career paths. You may also wish to progress on to a pre-degree Foundation Diploma in Art and Design offered at Andover College.

# FILMMAKING

**A LEVEL**

## A LEVEL • LEVEL 3

This subject introduces you to a wide range of filmic and other visual references whilst developing your skills as a filmmaker.

## ENTRY REQUIREMENTS

Five GCSEs at grade 9–4, including English and a creative subject. BTEC Level 2 qualifications considered in subject related courses.

## WHAT NEXT

Filmmaking can lead to career progression through university courses or guide you in ways to various other careers within the Film industry. You may also wish to progress on to a pre-degree Foundation Diploma in Art and Design offered at Andover College.

# GRAPHIC COMMUNICATION

**A LEVEL**

## A LEVEL • LEVEL 3

You will develop skills in a number of graphic disciplines, learning about identity and branding, typography, illustration, magazines, advertising and layout. You will use the Adobe suite; Illustrator, Photoshop and InDesign as well as traditional art, design and printmaking skills.

## ENTRY REQUIREMENTS

Five GCSEs at grade 9–4, including English and a creative subject. BTEC Level 2 qualifications considered in subject related courses.

## WHAT NEXT

Graphic design lends itself to many different career opportunities as well as various university courses. You may also wish to progress on to a pre-degree Foundation Diploma in Art and Design offered at Andover College.

### A LEVEL • LEVEL 3

This dynamic course will enable you to take more considered photographs and elevate your images to make them to stand out.

### ENTRY REQUIREMENTS

Five GCSEs at grade 9–4, including English and a creative subject. BTEC Level 2 qualifications considered in subject related courses.

### WHAT NEXT

Photography can lead to many careers, however, it can also feed into several creative industries such as marketing and advertising. You may also wish to progress on to a pre-degree Foundation Diploma in Art and Design offered at Andover College.



**“ YOUR LECTURERS AND TUTORS REALLY CARE ABOUT YOU AND WILL PROMOTE A HAPPY ENVIRONMENT YOU CAN SUCCEED IN. IT WILL ALSO PROVIDE YOU WITH GREAT OPPORTUNITIES AND WILL PREPARE YOU FOR YOUR FUTURE, NO MATTER WHAT YOUR AMBITIONS.”**

Bradley: Film Making, Business and Law

# DIGITAL MEDIA



Studying Digital Media is very exciting and we have courses and facilities for both creative thinkers and creative makers and those of you looking to pursue a career in the creative industries.

## DIGITAL MEDIA



### NATIONAL CERTIFICATE/NATIONAL EXTENDED CERTIFICATE • LEVEL 3 (BTEC)

Throughout the Digital Media course, you will learn transferable skills of collaboration and working independently by creating work that takes you through the processes of creating a project.

### ENTRY REQUIREMENTS

Five GCSEs at grade 9–4, including English.

### WHAT NEXT

Completion of this course can lead to various Higher Education courses.



# DIGITAL CONTENT CREATION



## NATIONAL FOUNDATION DIPLOMA/NATIONAL DIPLOMA • LEVEL 3 (BTEC)

To work within the creative industries, you will need to stand out, be original and innovative. From promotion of brands to promoting yourself as a viable brand our Digital Content Creation course will set you up for your digital future.

## ENTRY REQUIREMENTS

Five GCSEs at grade 9–4, including English and Maths.

## WHAT NEXT

This course can take you on to different universities to study a wide range of digital media/art subjects. There are also many possible careers.

# DIGITAL ARTS AND TECHNOLOGY

## HIGHER NATIONAL CERTIFICATE • LEVEL 4

This programme will allow you to use technology to express wide-ranging ideas to an audience. You will learn a wide range of technical skills that can be applied to projects including digital design, animation and audio.

## ENTRY REQUIREMENTS

Completion of a Level 3 course (BTEC, A Level or Access to Higher Education).

## WHAT NEXT

Progress to a HND (Level 5) In Digital Arts and Technology or top up to BA in Digital and Creative Media subjects. Employment can also be found in the digital industries.

## HNCs

Many students find HNCs a far more affordable option than attending university. Fees are reviewed each year but the course costs roughly half the amount of university tuition. Student loans are available through Student Finance, England. **See page 42.**



## UCAS TARIFF POINTS AVAILABLE

BTEC qualifications are equivalent to A Levels and they carry UCAS points. Find out more on page 30.

## NOTES:

---

---

---

---

---

---

---

---

# ELECTRICAL INSTALLATION



Electrical Installation at Andover will give you the opportunity to learn Commercial, Industrial, and Domestic installation work, both practical and theory, covering Electrical Science, Health and Safety, Overseeing the work environment and Installation Practices.

## EAL – ELECTRICAL INSTALLATION ELECTRO-TECHNICAL INSTALLATION (BUILDINGS AND STRUCTURES)

---

### DIPLOMA • LEVEL 2

This course includes the technical knowledge and practical skills to help start off your career in the Electrical industry.

### ENTRY REQUIREMENTS

Five GCSEs at grade 5 or above, including Maths, English and preferably Science. Plus, a favourable report from school or relevant experience and knowledge of the Electrical Contracting industry.

### WHAT NEXT

Level 3 Electrical Installation course or Apprenticeship in Electrical Installation, Level 3 NVQ programme.

## EAL – ELECTRICAL INSTALLATION ELECTRO-TECHNICAL INSTALLATION (BUILDINGS AND STRUCTURES)

---

### DIPLOMA • LEVEL 3

This course is for those already holding the EAL or City & Guilds Level 2 Diploma or with relevant experience and knowledge of the Electrical industry who wish to enhance their career prospect.

### ENTRY REQUIREMENTS

Successful completion of the EAL or City & Guilds Level 2 Diploma in Electrical Installations or equivalent, or suitable relevant experience and knowledge of the Electrical Contracting industry.

### WHAT NEXT

You could progress straight into employment or alternatively a Level 4 qualification. There is also the option to progress to Higher Education HNC/HND or Degree.

## INDUSTRY WORK PLACEMENTS

As part of our EAL Level 3 Advanced Diploma in Electrical Installation, all students will complete a work placement in the industry throughout the academic year. If you are already working in the industry, you could use your part-time job towards this module. Your weekly timetable will include one dedicated work placement day and there will be group tutorial sessions throughout the year, in order to complete time sheets and portfolios.

# ENGLISH



English at Andover College provides a stimulating environment in which to study one of three different pathways. Depending on your area of interest, you could study classic texts, learn how language is used or write creatively.

While English builds on the skills learnt at school, content is very different. It is important to explore the different pathways to find the right one for you!

## ENGLISH LANGUAGE

**GCSE**

### GCSE • LEVEL 2

Employers in all sectors require you to have English qualifications as this demonstrates ability in a core subject. This one-year course allows you the opportunity to re-sit GCSE English Language.

### ENTRY REQUIREMENTS

GCSE English at grade 3.

### WHAT NEXT

GCSE English at grade 4 is required by many employers and for entry to university.



### A LEVEL • LEVEL 3

You will study how language is used in written, spoken and electronic forms and identify how these genres affect how language is structured.

### ENTRY REQUIREMENTS

Five GCSEs at grade 9–4, including a minimum Level 5 in GCSE English Language. BTEC Level 2 qualifications considered in subject related courses.

### WHAT NEXT

A Level English is highly valued by employers and in Higher Education. Career paths may include speech therapy, journalism, teaching, translation and editing.

# ENGLISH LANGUAGE AND LITERATURE

## A LEVEL

### A LEVEL • LEVEL 3

You will explore aspects of both English Language and Literature through a range of set texts which are exclusively modern – 20th and 21st century.

### ENTRY REQUIREMENTS

Five GCSEs at grade 9–4, including a minimum Level 5 in GCSE English Language and English Literature. BTEC Level 2 qualifications considered in subject related courses.

### WHAT NEXT

A Level English is highly valued by employers and in Higher Education. Career paths could include teaching, journalism and media or professional writing.

# ENGLISH LITERATURE

## A LEVEL

### A LEVEL • LEVEL 3

You will explore classic literary texts, from novels to plays and poetry. The course uses literature from a range of periods, such as Chaucer, Shakespeare and literature of the 21st century.

### ENTRY REQUIREMENTS

Five GCSEs at grade 9–4, including a minimum Level 5 in GCSE English Literature. BTEC Level 2 qualifications considered in subject related courses.

### WHAT NEXT

This subject is highly valued in Higher Education and by employers. Career paths could include teaching, journalism, media, copy editing or professional writing.

# EXTENDED PROJECT QUALIFICATION



The AS Level Extended Project Qualification (EPQ) provides you with the opportunity to focus on an area of interest without the constraints of working towards set topics. This gives you the scope to use your initiative and be creative in what you do, whether it be an artefact, an investigation, an event or an in-depth essay.

## EXTENDED PROJECT QUALIFICATION

---

### AS LEVEL • LEVEL 3

Through the Extended Project Qualification you will develop your skills as an independent learner in a subject of your choice. This allows you to develop skills that can range from research and project management to higher level analytical skills.

### ENTRY REQUIREMENTS

Five GCSEs at grade 9–4, including a grade 5 or above in English Literature and English Language. BTEC Level 2 qualifications considered in subject related courses.

### WHAT NEXT

This course facilitates career progression in areas such as marketing, PR, events management, teaching and journalism as well as entry in to Higher Education.



**“STUDYING AT ANDOVER COLLEGE HAS INSPIRED ME TO CONTINUE STUDYING AND PURSUE A CAREER IN CREATIVE WRITING, WHICH HAD PREVIOUSLY BEEN JUST A HOBBY. THE LECTURERS TEACH THE COURSES TO A VERY HIGH STANDARD AND HELP YOU MAKE THE BEST DECISIONS GOING FORWARD TO LIFE BEYOND COLLEGE.”**

Rachel: Fine Art, Psychology, English Literature and an EPQ

# FILM AND MEDIA STUDIES



Media and Film Studies provide students with vital tools that are necessary to understanding the media's significance and its power. These courses involve the study of contemporary and historical texts from an analytical approach. Over the two years, both courses will enable you to study a range of media and film forms from different time periods, countries and cultures.





# FINANCIAL STUDIES



Financial Studies (CeFS) covers the core disciplines of individual financial capability. Students are taught how to become responsible borrowers and sensible savers, by looking at the products and services that are available to them in the Financial sector, such as mortgages and investments.

## FINANCIAL STUDIES

---

### CERTIFICATE/DIPLOMA • LEVEL 3

The qualification in Financial Studies is a comprehensive introduction to personal finance. As well as providing valuable life-skills, the course also develops skills of critical analysis and evaluation, synthesis and written communication.

### ENTRY REQUIREMENTS

Five GCSEs at grade 9–4, including Maths and English Language. BTEC Level 2 qualifications considered in subject related courses.

### WHAT NEXT

These desirable skills enable students to become highly skilled, work-ready individuals with a bright future in any financial or business environment or setting, such as an apprenticeship, Higher Education or into employment.



**“ SINCE STARTING ANDOVER COLLEGE, I HAVE GROWN INTO A DIFFERENT PERSON, I AM MUCH MORE CONFIDENT, AND THIS HAS HELPED ME TO PREPARE FOR MY FUTURE STEPS TOWARDS UNIVERSITY! THIS IS SOMETHING I NEVER THOUGHT POSSIBLE FOR ME AND I TRULY BELIEVE COLLEGE HAS HELPED WITH THIS.”**

Molly, Business and Financial Studies



# GEOGRAPHY AND ENVIRONMENTAL STUDIES



Understanding our world and how we, as humans, impact upon it has never been as important as it is now. The world and its environment is changing. Whilst Geography and Environmental Science explore lots of complex issues that we must understand. They delve into the natural elements of the world such as the atmosphere, land and oceans, how the earth was formed and how it is changing over time.





# HAIRDRESSING



Are you looking to qualify in hairdressing or are already a successful professional looking to develop your business further – look no further, we have the qualification for you here at Andover College.

We will expose you to new experiences, fresh and emerging ideas and a number of industry experts. Our commercial salon, Elements, will give you further experience and prepare you even more for a successful career in the industry.

## HAIRDRESSING – LADIES HAIRDRESSING

---

### VTCT DIPLOMA • LEVEL 2

This course provides an insight into the theory and practical aspects of all hairdressing skills and related topics allowing progression into the workplace as a junior stylist.

### ENTRY REQUIREMENTS

Grade 9–4 in GCSE English Language or Literature and Maths.

### WHAT NEXT

Progression to Level 3 course or Apprenticeship. Employment as a hairdresser, either in a salon or self-employment.

## HAIRDRESSING – LADIES HAIRDRESSING

---

### VTCT DIPLOMA • LEVEL 3

You will learn how to cut hair using a combination of techniques, creatively colour and lighten hair, style and dress hair, and offer hair colour correction services and mens basic cutting.

### ENTRY REQUIREMENTS

Level 2 Diploma in Hairdressing.

### WHAT NEXT

Employment within the Hairdressing industry working in a hair salon, mobile hairdressing or even on a cruise ship.

## HAIRDRESSING

---

### VTCT NVQ DIPLOMA • LEVEL 2

This course provides an insight into the theory and practical aspects of all hairdressing skills and related topics allowing progression into the workplace at a junior stylist level.

### ENTRY REQUIREMENTS

Grade 9–4 in GCSE English Language or Literature and Maths.

### WHAT NEXT

Progression to Level 3 course or Apprenticeship. Employment as a hairdresser, either in a salon or self-employment.

## PART-TIME COURSES

We also offer part-time hairdressing courses, for adults. For more information, take a look in our part-time guide.

# HAIR AND BEAUTY – INTRODUCTION TO THE HAIR AND BEAUTY SECTOR

## CERTIFICATE • LEVEL 1

The Level 1 Certificate in an introduction to the Hair and Beauty sector is designed to introduce you to a range of practical skills from across the Hair and Beauty sector.

## ENTRY REQUIREMENTS

GCSE Maths and English at grade 2.

## WHAT NEXT

Progress to the Level 2 skills Hairdressing.

# HAIR AND BEAUTY – HAIR AND BEAUTY SKILLS

## VTCT DIPLOMA • LEVEL 2

This course is very creative and will give you a good foundation from which to start your exciting hairdressing career. You will be encouraged to try out new things, learn new techniques and work with clients to build your skills.

## ENTRY REQUIREMENTS

GCSE English and Maths at grade 3 or above.

## WHAT NEXT

On completion of the above qualification you will be able to progress to a Level 2 qualification in hairdressing or beauty therapy as part of an apprenticeship or a full-time course.

## INDUSTRY WORK PLACEMENTS

All students studying a Level 2 Technical Diploma in Ladies Hairdressing will complete a work placement in a professional salon throughout the academic year. Two dedicated placement days will form a part of a student's weekly timetable and there will be regular group tutorial sessions in order to complete time sheets and portfolios.

### NOTES:

---



---



---



---



---



---



---



---



---



---



# ELEMENTS

— HAIRDRESSING SALONS —

- Taught by industry experts
- Top facilities and equipment
- Excellent links with employers
- Proud Partnership with Schwartzkopf

**Follow us on Facebook for the latest news, promotions and special offers**

 **ElementsAndover**



Elements Salons at Andover College, Charlton Road, Andover SP10 1EJ 

At Andover College you'll learn from industry experts in a working salon, giving you the opportunity to develop the skills and techniques needed to stand out in the hairdressing sector.

**FIND OUT MORE ABOUT THE ELEMENTS SALON [ANDOVER.AC.UK/ELEMENTS](https://andover.ac.uk/elements)**

# HEALTH AND SOCIAL CARE



You will learn the theoretical side of Health and Social Care whilst adapting your knowledge to fit into different health and social care settings. There is also the opportunity to take part in different work placements giving you experience within the industry. By the end of the courses you will have all you need to go on to study at a higher level or to go straight into employment.

## HEALTH AND SOCIAL CARE

### FIRST CERTIFICATE • LEVEL 2 (BTEC)

This course is the first step in pursuing a career in Health and Social Care where the units that you study develop your skills to be able to support others such as communication, equality and diversity and health living.

### ENTRY REQUIREMENTS

Four GCSEs at grade 9–3, including English Language.

### WHAT NEXT

Progression to a Level 3 Health and Social Care course, apprenticeships and work based learning courses.

## INDUSTRY WORK PLACEMENTS

As part of our Level 2 Certificate programme, all students will complete a work placement in a health/social care environment throughout the academic year. A dedicated placement day will form a part of a student's weekly timetable and there will be group tutorial sessions throughout the year, in order to complete time sheets and portfolios.

# HEALTH AND SOCIAL CARE



## NATIONAL CERTIFICATE/NATIONAL EXTENDED CERTIFICATE • LEVEL 3 (BTEC)

Taken alongside other subjects, you will study a range of topics including equality, diversity, rights in Health and Social Care and developing effective communication in Health and Social Care.

## ENTRY REQUIREMENTS

Five GCSEs at grade 9–4, including English Language and Maths or Science. Distinction in BTEC Level 2 Health and Social Care considered.

## WHAT NEXT

Depending on what other subjects are studied alongside the Extended Certificate in Health and Social Care there are a range of Higher Education course.

# HEALTH AND SOCIAL CARE



## NATIONAL FOUNDATION DIPLOMA/NATIONAL EXTENDED DIPLOMA • LEVEL 3 (BTEC)

This course covers a range of units such as Psychology, Sociology and Physiology to teach you the skills needed to progress into a career in Health and Social Care or to study at university.

## ENTRY REQUIREMENTS

Five GCSEs at grade 9–4, including English Language, Maths and Science. Distinction in BTEC Level 2 Health and Social Care considered.

## WHAT NEXT

A range of Higher Education courses are available, including; Midwifery/Nursing, Teaching, Occupational Therapy and Speech Therapy.

## BTEC NATIONAL EXTENDED DIPLOMA HEALTH AND SOCIAL CARE (NURSING AND MIDWIFERY PATHWAY)

For those students who are interested in a career in the NHS alongside studying the BTEC National Extended Diploma in Health and Social Care you will also be provided with a range of opportunities which include:

- The opportunity to complete work placement in a healthcare setting.
- Take part in workshops with simulated patients to carry out many practical elements of the course such as taking blood pressure, checking heart rates and pulse, and practice moving and handling.
- Specialist expert advice from universities such as a personal statement writing workshop.
- Mock interviews to help prepare students for interviews to gain a place at university or to apply for an NHS vacancy.
- University visits.



## UCAS TARIFF POINTS AVAILABLE

BTEC qualifications are equivalent to A Levels and they carry UCAS points. Find out more on page 30.

# HISTORY AND POLITICS



History and Politics are forever changing and evolving. Studying these subjects at A Level will help you understand the modern world, challenge ideas and provide opportunities to debate provocative issues whether that be events from over 100 years ago or situations that will occur tomorrow! Across both subjects you will learn about different societies, past and present, develop an awareness of cultural and political issues and analyse a wide range of information.



## HISTORY (EARLY MODERN)

**A LEVEL**

### A LEVEL • LEVEL 3

You will explore the key religious, political and societal changes that emerged within the early-modern period – 1500–1700, with a particular focus on Europe, and the impact of the rise in Protestantism. In the second year, students study the 16th and 17th century witch craze.

### ENTRY REQUIREMENTS

Five GCSEs at grade 9–4, with a minimum grade 5 in English Language.

### WHAT NEXT

This subject gives you desirable transferable skills which will benefit you in a variety of degree options, and could lead to various careers.

## HISTORY (MODERN)

**A LEVEL**

### A LEVEL • LEVEL 3

You will explore the major political and cultural changes in the 20th century America through consideration of the changing political landscape, the development of the civil rights movement, and important changes to society. In the second year, students study warfare from 1790–1918.

### ENTRY REQUIREMENTS

Five GCSEs at grade 9–4, with a minimum grade 5 in English Language.

### WHAT NEXT

This subject gives you desirable transferable skills which will benefit you in a variety of degree options, and could lead to various careers.

## POLITICS

**A LEVEL**

### A LEVEL • LEVEL 3

Current affairs are a major aspect of politics, and in A Level Politics you will consider the potential impacts that past, current, and immediate, political issues could have on our government and society.

### ENTRY REQUIREMENTS

Five GCSEs at grade 9–4, with a minimum grade 5 in English Language.

### WHAT NEXT

This subject gives you desirable transferable skills which will benefit you in a variety of degree options, and could lead to various careers.

### NOTES:

---



---



---

# LAW

The study of Law will provide you with an understanding of the role of law in society whilst raising awareness of the rights and responsibilities of individuals. You will have an introduction to the English legal system as well as some areas of substantive law.

## APPLIED LAW



### NATIONAL CERTIFICATE/NATIONAL EXTENDED CERTIFICATE • LEVEL 3 (BTEC)

The qualification will provide the opportunity for learners to showcase their skills and apply their knowledge in an appropriate, work-related context, in the study of Law.

### ENTRY REQUIREMENTS

Five GCSEs at grade 9–4, including English Language.

### WHAT NEXT

Applied Law is designed to develop skills for the further study of law or law related courses or towards an apprenticeship in the legal sector. This qualification can lead to many different career paths.

## LAW

## A LEVEL

### A LEVEL • LEVEL 3

The qualification will provide the opportunity for learners to pursue a further interest in law enabling a development of both knowledge and application of the legal system.

### ENTRY REQUIREMENTS

Five GCSEs at grade 9–4 including a grade 5 in English Language or above.

### WHAT NEXT

A Level Law is designed to develop skills for the further study of law or law related courses. This qualification can lead to many different career paths.



### UCAS TARIFF POINTS AVAILABLE

BTEC qualifications are equivalent to A Levels and they carry UCAS points. Find out more on page 30.



**“ ANDOVER COLLEGE HAS A HEALTHY AND POSITIVE COMMUNITY OF PEOPLE WHO WANT THE BEST FOR EACH OTHER AND THE STAFF WILL SUPPORT YOU IN ANY WAY THEY CAN. ”**

Adam: Criminology and Law

# MATHS



Andover College offers a wide array of Maths courses. Each subject allows you to develop skills in problem solving, logic and analysing solutions. On top of this, the subject supplements a host of other courses including Physics, Chemistry, Biology as well as Business, Psychology and Computing.

## MATHS GCSE (FOUNDATION OR HIGHER TIER)

**GCSE**

### CERTIFICATE • LEVEL 2

The course aims to give you greater knowledge in essential mathematical skills that can be used in day-to-day activities. We offer two levels: foundation or higher, depending on your current grade and aspirations. It is essential that you are committed to studying Maths at GCSE. This course may be available for you if you are looking to re-sit GCSE Maths alongside your chosen subject(s).

### ENTRY REQUIREMENTS

GCSE Maths at grade 3.

### WHAT NEXT

GCSE Maths at grade 4 is required by many employers and for entry to university. The skills learned in this subject are useful for many areas.



# MATHS – CORE

---

## CERTIFICATE • LEVEL 3

Core Mathematics was developed to enable the study of mathematical topics in practical, real-life contexts.

## ENTRY REQUIREMENTS

Five GCSEs at grade 9–4, including a grade 5 in Maths or above. BTEC Level 2 qualifications considered in subject related courses.

## WHAT NEXT

Core Maths is a course that universities have come out in strong support of. Employers from all different sectors are also firmly behind the Core Maths qualification.

# MATHEMATICS

**A LEVEL**


---

## A LEVEL • LEVEL 3

This subject is about working with patterns and structures found in science and technology. From computers and space exploration to body scanners and medicine, understanding these patterns help explain and control natural happenings and situations.

## ENTRY REQUIREMENTS

Six GCSEs at grade 9–4, including a grade 7 in Maths or above.

## WHAT NEXT

This course can help you to progress into a wide variety of careers and Higher Education.

# FURTHER MATHS

**A LEVEL**


---

## A LEVEL • LEVEL 3

This subject is designed to broaden your mathematical knowledge and skills and will help you to develop excellent analytical skills that will transfer into whatever area you are considering for a career. It needs to be studied with A Level Mathematics.

## ENTRY REQUIREMENTS

Six GCSEs at grade 9–4, including a grade 8 in Maths or above.

## WHAT NEXT

This course can help you to progress on to any mathematically rich degree as well as a variety of careers.

# STATISTICS

**A LEVEL**


---

## A LEVEL • LEVEL 3

A Level Statistics is designed for students who would like to study a numerate post-16 subject but not wishing to study pure mathematics. It helps you to use and apply statistical analysis to real world data and context.

## ENTRY REQUIREMENTS

Five GCSEs at grade 9–4, including a grade 6 in Maths or above. BTEC Level 2 qualifications considered in subject related courses.

## WHAT NEXT

This course can help you to progress into a wide variety of careers and Higher Education.

# MOTOR VEHICLE



Accelerate into a career in the Motor Vehicle industry!

If you love cars and enjoy fixing things, your career starts here. Based in our £3.9 million Technology and Future Skills Centre, you'll learn from experienced staff in industry standard workshops, combining hands-on practical work with the theoretical knowledge needed to succeed.

## INTRODUCTION TO MOTOR VEHICLE STUDIES TRANSPORT MAINTENANCE – LIGHT VEHICLE

### DIPLOMA • LEVEL 1

You will get a real feel for the Motor Vehicle industry, using the latest industry equipment. You will also learn basic health and safety and develop your communication and hands-on skills on this course.

### ENTRY REQUIREMENTS

Four GCSEs at grade 2, including Maths and English. Evidence of a basic education and enthusiasm for motor vehicles will be sought at interview.

### WHAT NEXT

Progression to Level 2 course.

# VEHICLE INSPECTIONS

---

## IMI DIPLOMA • LEVEL 2

You will learn the skills and theory needed for entry into the Automotive industry or progression to the Level 2 Diploma in Light Vehicle Service and Repair.

## ENTRY REQUIREMENTS

Four GCSEs at grade 9–3, including Maths, English and Science or successful completion of Level 1 IMI Diploma in Transport Maintenance.

## WHAT NEXT

Progression to Level 2 Diploma in Light Vehicle Service and Repair Principles.

# LIGHT VEHICLE SERVICE AND REPAIR PRINCIPLES

---

## IMI DIPLOMA • LEVEL 2

This course is designed to improve your knowledge of motor vehicles and the motor industry. This will include workshop health and safety, removing and replacing components and understanding a wide range of system.

## ENTRY REQUIREMENTS

Four GCSEs at grade 9–3, including Maths, English and Science or successful completion of Level 1 IMI Diploma in Transport Maintenance.

## WHAT NEXT

Progression to Level 3 Diploma in Vehicle Service and Repair, employment or Apprenticeship in the Motor Vehicle industry.

# LIGHT VEHICLE MAINTENANCE AND REPAIR PRINCIPLES

---

## IMI DIPLOMA • LEVEL 3

Your previous study of the systems found on light vehicles will enable you to diagnose complex faults and repair them.

## ENTRY REQUIREMENTS

Four GCSEs at grade 9–3, including Maths and English at grade 4 or Level 2 IMI Diploma in Vehicle Service and Repair.

## WHAT NEXT

Higher Education – Foundation Degree Motor Sport courses, employment or Apprenticeship in the Motor Vehicle industry.

# MOTORSPORT VEHICLE MAINTENANCE AND REPAIR

## IMI DIPLOMA • LEVEL 2/3

The IMI Diploma in Motorsport is a learning programme to meet the current and future needs of the Motorsport world.

## ENTRY REQUIREMENTS

Five GCSEs at grade 9–4, including Maths, English and Science or equivalent qualifications.

## WHAT NEXT

This course can lead to university level study, employment or an Apprenticeship in the Motorsport industry.

# ENGINEERING (NEW FOR 2021!)

## DIPLOMA • LEVEL 2

Students on the course will study in the college's Future Skills Centre gaining a basic grounding in a range of engineering skills. You will develop skills relevant to manufacturing, fabrication and engineering such as welding, cutting and design whilst gaining knowledge of the principles behind your practical work.

## ENTRY REQUIREMENTS

Four GCSEs at 9–3 to include Maths, English at grade 4.

## WHAT NEXT

Following on from the programme you can progress to further studies or an apprentice where you will start to specialise in the growing range of sectors dependent engineering skills.

### NOTES:

---



---



---



---



---



---



---



---



---



---



---



---



---



---



---



---





**“ ANDOVER COLLEGE OFFERED THE COURSE THAT I WANTED AND WAS RIGHT ON MY DOORSTEP. COLLEGE HELPED ME TO GET ALL THE GRADES I WANTED AND I HAVE EXPERIENCED GREAT OPPORTUNITIES AND FUN TIMES WITH MY FRIENDS DURING MY TIME HERE.”**

Oliver: Motorsport

# MUSIC



Music at Andover College prepares students for careers in the industry in a variety of different forms. Through the practical performance skills of Music Performance through to Music Technology Production. Students will be pushed to develop their performance skills in a variety of different performance environments throughout the course such as performing in Local Venues, Performance Evenings at college and also as the live band during the annual College Pantomime.

## MUSIC

### FIRST AWARD • LEVEL 2 (BTEC)

This one year course will give you the opportunity to develop skills within music and give you a chance to develop both theoretical and practical skills.

### ENTRY REQUIREMENTS

Four GCSEs at grade 3.

### WHAT NEXT

Progression on to Level 3 courses.  
Employment in the Music industry such as; performer, teaching and events organising.

# MUSIC PERFORMANCE



## NATIONAL FOUNDATION DIPLOMA/NATIONAL EXTENDED DIPLOMA • LEVEL 3 (BTEC)

This full-time course is for students who want to live and breathe music every day. Including everything you would learn on the Certificate and Subsidiary Diploma, there is an extra emphasis on performing, song writing and the Music industry from a business perspective.

## ENTRY REQUIREMENTS

Five GCSEs at grade 9–4 and a successful audition. Some prior knowledge of music theory is an advantage.

## WHAT NEXT

Foundation or Honours degrees in music or related subjects. Employment within the Music industry in publishing and song writing, artist management or as a performer.

# MUSIC TECHNOLOGY – EVENTS SUPPORT



## NATIONAL CERTIFICATE/NATIONAL SUBSIDIARY DIPLOMA • LEVEL 3 (BTEC)

You will develop the skills and knowledge needed to manage music events. You will become familiar with tasks, strategies and factors that influence the success of an event, then will put the theory into practice by planning and managing a music event.

## ENTRY REQUIREMENTS

Five GCSEs at grade 9–4.

## WHAT NEXT

BA/BSc (Hons), roles in studio and live sound engineering, music production and the Music industry including artist or stage management, publishing or promotion.

# MUSIC TECHNOLOGY – PRODUCTION



## NATIONAL CERTIFICATE/NATIONAL SUBSIDIARY DIPLOMA • LEVEL 3 (BTEC)

If you have an interest in how music is produced, this course is ideal for you. It features a total of six units that are assessed through coursework and practical activities and is the equivalent of one A Level.

## ENTRY REQUIREMENTS

Five GCSEs at grade 9–4, including English and Maths.

## WHAT NEXT

BA/BSc (Hons), roles in studio and live sound engineering, music production and the Music industry including artist or stage management, publishing or promotion.

### NOTES:

---



---



---

# MUSIC



## NATIONAL CERTIFICATE/NATIONAL EXTENDED CERTIFICATE • LEVEL 3 (BTEC)

This course is a combination of practical and theoretical work including individual and group performances. You will explore music from a wide range of styles and learn the history of popular music from the 1950's to the present day.

## ENTRY REQUIREMENTS

Five GCSEs at grade 9–4 and a successful audition. Some prior knowledge of music theory is an advantage.

## WHAT NEXT

Foundation or Honours degree in music or related subjects. Employment within the Music industry including song writing, theatre/TV work or performance opportunities solo or in bands.

# MUSIC



## NATIONAL EXTENDED CERTIFICATE/NATIONAL DIPLOMA • LEVEL 3 (BTEC)

This is everything you would study on the certificate and more! You will study a range of music styles in depth and study the process of writing and recording your own music. The course is aimed at serious musicians.

## ENTRY REQUIREMENTS

Five GCSEs at grade 9–4 and a successful audition. Some prior knowledge of music theory is an advantage.

## WHAT NEXT

Foundation or Honours degrees in music or related subjects. Employment within roles in music production, events management/ festival planning and as well performing as a solo artist or in a band.



### UCAS TARIFF POINTS AVAILABLE

BTEC qualifications are equivalent to A Levels and they carry UCAS points. Find out more on page 30.

### NOTES:

---



---



---



---



---



---



---



---



---



---



**“ THE LECTURERS HAVE PROVIDED MYSELF AND OTHERS MANY OPTIONS ABOUT CAREER PATHS AND UNIVERSITY CHOICES FOR THE FUTURE, WHICH PERSONALLY HAS HELPED ME NARROW DOWN THE CAREER I AM CHOOSING TO FOLLOW.”**

Carys: Animation, Drama, Music



# PERFORMING ARTS



Performing Arts is a course, which aims to give students an insight into the world of performance training. This course is designed for the student wishing to follow a career path in theatre or entertainment.

Acting is a course which will provide students with the opportunity to develop their performance skills in a variety of different performance styles. This subject is designed for students who are looking for a career in theatre.

## PERFORMING ARTS



### NATIONAL FIRST AWARD • LEVEL 2 (BTEC)

The course will give you the opportunity to develop skills within the Performing Arts sector. Throughout this course, you will develop both theoretical and practical skills.

### ENTRY REQUIREMENTS

Four GCSEs at grade 3.

### WHAT NEXT

Progression to Level 3 course.

# PERFORMING ARTS – ACTING



## NATIONAL CERTIFICATE/NATIONAL EXTENDED CERTIFICATE • LEVEL 3 (BTEC)

No previous acting experience is required, just the energy, commitment and desire to succeed!

## ENTRY REQUIREMENTS

Five GCSEs at grade 9–4.

## WHAT NEXT

Higher Education with a combination of other Level 3 BTEC and A Level courses. Employment in stage performance or broadcast media or as a community/freelance Arts Worker.

# PERFORMING ARTS



## NATIONAL FOUNDATION DIPLOMA/NATIONAL EXTENDED DIPLOMA • LEVEL 3 (BTEC)

Students are encouraged to work independently and as a company to create a vast array of performances, not only as performers but as directors. You will be taught dance, acting and voice work, how to run a show from start to finish and take your own production on tour.

## ENTRY REQUIREMENTS

Five GCSEs at grade 9–4.

## WHAT NEXT

University, drama or dance school to complete a performing arts degree and various career paths.



## UCAS TARIFF POINTS AVAILABLE

BTEC qualifications are equivalent to A Levels and they carry UCAS points. Find out more on page 30.

## NOTES:

---

---

---

---

---

---

---

---

---

---

# PERFORMING ARTS

## HIGHER NATIONAL CERTIFICATE • LEVEL 4

This course equips students with the knowledge, understanding and skills required to enable students to become professional performers and theatrical practitioners, or progress to university. You will explore acting for the camera and musical theatre, movement for the actor, devising performance and applied contemporary performance practice.

## ENTRY REQUIREMENTS

Completed one of the following: BTEC Extended Diploma in Performing Arts (Merit), Access to HE course, A Level(s) at C or above in a relevant subject We will also encourage and consider applicants who possess a high level of experience in performing but may not have formal qualifications. All offers are subject to an interview and audition.

## WHAT NEXT

University – BA/BSc top up. Working professionally as an actor, performer, in production, theatre or event management, as a teacher or drama coach.

## HNCs

Many students find HNCs a far more affordable option than attending university. Fees are reviewed each year but the course costs roughly half the amount of university tuition. Student loans are available through Student Finance, England. **See page 42.**

## NOTES:

---



---



---



---



---



---



---



---



---



---



---



---



---



---



---



---



**“ WHEN CHOOSING A COLLEGE THAT’S RIGHT FOR YOU, YOU NEED TO MAKE SURE THAT IT MEETS YOUR PERSONAL CRITERIA. ANDOVER COLLEGE IS SO EFFECTIVE AT MEETING EVERYONE’S INDIVIDUAL NEEDS WHICH IS SOMETHING I WAS REALLY DRAWN TO. FOR ANYONE WHO’S CONSIDERING ANDOVER, BUT HAS DOUBTS, THEY CAN BE REASSURED THAT THE COLLEGE IS SO FLEXIBLE AND CAN MAKE ADAPTATIONS TO MAKE SURE YOU FEEL AT EASE.”**

Sophie: Performing Arts

# PHILOSOPHY, RELIGION AND ETHICS



Students of Philosophy, Religion and Ethics are able to explore abstract questions about life, death and meaning, whilst also developing a range of transferable skills such as problem solving and communication. The subject encourages critical thinking, pushing students to question what they really know and believe whilst also developing an understanding of why other people think and believe differently.

## PHILOSOPHY, RELIGION AND ETHICS

**A LEVEL**

### A LEVEL • LEVEL 3

Philosophy, Religion and Ethics is a subject full of debate and discussion. Students are often keen to put forward their own perspectives on issues such as the existence of God, the nature of the soul, the ethics of Euthanasia and Buddhist teachings on impermanence and suffering.

### ENTRY REQUIREMENTS

Five GCSEs at grade 9–4, including a grade 5 or above in English. BTEC Level 2 qualifications considered in subject related courses.

### WHAT NEXT

This course has numerous career paths. Philosophy, Religion and Ethics is a rigorous academic pursuit that complements many other subjects and develops a range of transferable skills.





**“ I HAVE ENJOYED MY TIME AT ANDOVER COLLEGE BECAUSE YOU HAVE THE ABILITY TO GROW AND DEVELOP AS A PERSON AS WELL AS ACADEMICALLY. I ALSO ENJOYED SPENDING TIME WITH THE FRIENDS I HAVE MADE AND EVERYTHING I HAVE LEARNED FROM MY COURSES.”**

Finlay: Philosophy and Ethics, Classics and Modern History

# PRODUCTION ARTS (STAGE MANAGEMENT)



Productions Arts is a key area in which the Stage Management department operate and work closely with the Performing Arts departments to produce the sets, lighting, sound and props for all the college performances, including in our own college studio theatre and professional theatres.

## PRODUCTION ARTS (STAGE MANAGEMENT)



### NATIONAL CERTIFICATE/NATIONAL SUBSIDIARY DIPLOMA • LEVEL 3 (BTEC)

This course is designed for those who love theatre and want to take an active role in bringing creative ideas to life. You will get opportunities in lighting, sound, props, set and the back stage operations required for live performance.

### ENTRY REQUIREMENTS

Five GCSEs at grade 9–4, including English. Merit in a BTEC Level 2 Diploma in a related subject will be considered.

### WHAT NEXT

Progression to Drama School or Employment within the industry.

# PRODUCTION ARTS (STAGE MANAGEMENT)



## NATIONAL SUBSIDIARY DIPLOMA/NATIONAL DIPLOMA • LEVEL 3 (BTEC)

Like our other stage management courses, this course is designed for those who love theatre and want to take an active role in bringing creative ideas to life. You will gain an opportunity to take on larger roles within the Production Arts. You will get the chance to run departments within the major college shows.

### ENTRY REQUIREMENTS

Five GCSEs at grade 9–4, including English. Merit in a BTEC Level 2 Diploma in a related subject will be considered.

### WHAT NEXT

Progression to Foundation Degrees or into employment.

# PRODUCTION ARTS (STAGE MANAGEMENT)



## NATIONAL FOUNDATION DIPLOMA/NATIONAL EXTENDED DIPLOMA • LEVEL 3 (BTEC)

In the Foundation and Extended Diploma in Production Arts you will gain a broader understanding of the role of Production Arts in the broader spectrum of Performing Arts as an industry.

### ENTRY REQUIREMENTS

Five GCSEs at grade 9–4, including English. Merit in a BTEC Level 2 Diploma in a related subject will be considered.

### WHAT NEXT

Progression to Foundation Degrees or into employment.



### UCAS TARIFF POINTS AVAILABLE

BTEC qualifications are equivalent to A Levels and they carry UCAS points. Find out more on page 30.

### NOTES:

---

---

---

---

---

---

---

---

---

---

# PSYCHOLOGY AND SOCIOLOGY



Social Sciences are the study of society and the way in which people behave and influence the world around us. It helps explain how society works whether it be the creation of youth subcultures or explaining the complexities of human mind.

## PSYCHOLOGY

### GCSE • LEVEL 2

This course introduces you to the five main areas of psychology and research methods used in psychological investigations. You should have a genuine interest in explaining human behaviour, and consequently have the ability to apply what you learn in class to your own situation.

### ENTRY REQUIREMENTS

Five GCSEs at grade 9–3, including English.

### WHAT NEXT

After studying this subject you can move on to study any of our Level 3 courses.



## A LEVEL • LEVEL 3

Psychology is the scientific study of the mind and behaviour. You will gain an understanding of the process of planning, conducting, analysing and reporting psychological research.

## ENTRY REQUIREMENTS

Six GCSEs at grade 9–4, including a grade 5 or above in English, Science and Maths. BTEC Level 2 qualifications considered in subject related courses.

## WHAT NEXT

Progression to University. Potential career paths include therapy, counselling, scientific research, advertising, health and social care.

# SOCIOLOGY

## A LEVEL • LEVEL 3

Sociology enables us to study human society. The content of sociology allows for an understanding of many different cultures and identities.

## ENTRY REQUIREMENTS

Five GCSEs at grade 9–4, including a minimum Level 5 in GCSE English Language. BTEC Level 2 qualifications considered in subject related courses.

## WHAT NEXT

Progression to University. Possible career paths including teaching, law, journalism, politics, media, youth, religious orders, counselling and social work.

# APPLIED PSYCHOLOGY



## NATIONAL CERTIFICATE/NATIONAL EXTENDED CERTIFICATE • LEVEL 3 (BTEC)

This subject will enable you to understand the relationship between behaviour, performance and mental processes. You will then apply this knowledge to real life situations making this course all about the practical applications.

## ENTRY REQUIREMENTS

Five GCSEs at grade 9–4, including Maths, English and Science.

## WHAT NEXT

Progression to University. Potential career paths include therapy, counselling, scientific research, advertising, health and social care.



## UCAS TARIFF POINTS AVAILABLE

BTEC qualifications are equivalent to A Levels and they carry UCAS points. Find out more on page 30.



# SCIENCE



Our sciences course options give you the opportunity to learn how science works in the real world, opening doors to your career as you develop knowledge and skills used in industry. There will be many opportunities for you to participate in practical projects and experiments. The department holds a weekly Science Club where you get involved in a project of your own choosing, in the past projects have included potato cannons and homemade rockets.

## FIRST PRINCIPLES IN APPLIED SCIENCE

### GCSE • LEVEL 2

This course provides you with an introduction to important science disciplines, which will develop your knowledge and understanding of biology, chemistry and physics. You will be encouraged to pose scientific questions and define scientific problems.

### ENTRY REQUIREMENTS

No grades needed. However, GCSE Maths and English will have to be taken alongside the course – if not already achieved.

### WHAT NEXT

Progression to Level 3 courses.

# APPLIED HUMAN BIOLOGY (NEW FOR 2021!)



## NATIONAL CERTIFICATE/NATIONAL EXTENDED CERTIFICATE • LEVEL 3 (BTEC)

This course is ideally suited for students who wish to pursue a career in the health sector. As part of the course you will study a range of topics such as the structure of the human body, microbiology and factors that influence the health of individuals.

## ENTRY REQUIREMENTS

Five GCSEs at grade 9–4, including Maths, Science and English. BTEC Level 2 qualifications considered in subject related courses.

## WHAT NEXT

This two-year course generates the same UCAS tariff points as one A Level. Depending on what other subjects are studied alongside the Extended Certificate in Applied Human Biology a range of Higher Education courses are available.

# APPLIED SCIENCE



## NATIONAL CERTIFICATE/NATIONAL EXTENDED CERTIFICATE • LEVEL 3 (BTEC)

This course provides a viable alternative to the traditional A Level science route. It will enable you to develop an understanding from a vocational context in order to see how science works in the real world and develop knowledge and skills that can be used in the industry.

## ENTRY REQUIREMENTS

Five GCSEs at grade 9–4, including English, Maths and Science.

## WHAT NEXT

Progression to Higher Education and various careers in the industry.

# BIOLOGY

**A LEVEL**

## A LEVEL • LEVEL 3

Biology is the study of life, from whole ecosystems to the structure of the human body. This course allows you to combine practical testing with theory to enhance your learning.

## ENTRY REQUIREMENTS

Five GCSEs at grade 9–4, including a grade 6 in Maths, Biology or additional Science and a grade 5 in English. BTEC Level 2 qualifications considered in subject related courses with a Distinction achieved.

## WHAT NEXT

Progression to Higher Education. Career paths include a variety of areas such as medicine, dentistry, midwifery, nursing and other biomedical and healthcare professions.

# CHEMISTRY

**A LEVEL**
**A LEVEL • LEVEL 3**

You will develop an understanding of how chemists seek to utilise the world's natural resources to provide the food, products, medicines and energy sources required in everyday life.

**ENTRY REQUIREMENTS**

Five GCSEs at grade 9–4, including a grade 6 or above in Maths and Chemistry. BTEC Level 2 qualifications considered in subject related courses.

**WHAT NEXT**

A Level Chemistry can lead to careers in Chemical Engineering, Bio-chemistry, Veterinary Nursing, Forensic Science and Medicine. Even if you chose not to follow a scientific career a Chemistry A Level is widely respected across all disciplines.

# FORENSIC AND CRIMINAL INVESTIGATION (NEW FOR 2021!)

**NATIONAL EXTENDED CERTIFICATE/NATIONAL DIPLOMA • LEVEL 3 (BTEC)**

The course provides the scientific knowledge and practical scientific skills that underpins forensic studies as well as the application of Psychology and the understanding of the criminal justice system by studying criminal investigations from the crime scene through to the trial process.

**ENTRY REQUIREMENTS**

Five GCSEs at grade 9–4, including Maths, Science and English. BTEC Level 2 qualifications considered in subject related courses.

**WHAT NEXT**

Studied alongside another Level 3 subject can provide entry into Higher Education. Bsc (Hons) Forensic Studies, BA (Hons) Criminology, BSc (Hons) Criminology and Psychology and LLB (Hons) Law.

# PHYSICS

**A LEVEL**
**A LEVEL • LEVEL 3**

Physics is for the curious, and those eager to learn more about the fundamental nature and laws of the Universe. In Physics, we study the tiniest particles known to exist (in Atomic and Particle Physics).

**ENTRY REQUIREMENTS**

Five GCSEs at grade 9–5, including English and a grade 6 or above in Mathematic, additional Science or Physics.

**WHAT NEXT**

Physics lends itself to a number of different career paths in science and technology, aeronautics, aerospace and engineering, architecture, medicine and astronomy, the arts and sport.


**UCAS TARIFF POINTS AVAILABLE**

BTEC qualifications are equivalent to A Levels and they carry UCAS points. Find out more on page 30.



**“ THIS COLLEGE PROVIDES A LEARNING ENVIRONMENT NOT MANY OTHER COLLEGES CAN. THE RELATIONSHIPS YOU FORM WITH YOUR PEERS AND LECTURERS REALLY HELP YOU TO EXCEL AND DEVELOP AS A LEARNER. I HAVE DEFINITELY ENJOYED THE WIDE VARIETY OF TRIPS FOR MY SUBJECTS, ESPECIALLY FOR BIOLOGY, AS THEY ARE ENGAGING AND HELP YOU TO SEE WHY YOUR COURSES ARE RELEVANT TO THE MODERN WORLD.”**

Shea: Maths, Chemistry, Biology and EPQ

# SPORT AND LEISURE



Our sports courses combine expert coaching with great facilities to provide you with the best opportunities for a career in this high energy industry. We provide an excellent choice of courses, subsidised gym membership and great partnerships. Successful past students have gone on to study sport related degrees at renowned universities including Bath, Loughborough and Exeter.

Coaching and development students will learn their craft at the Portway stadium and 3G pitch as well as using the Andover leisure centre. We also engage with local coaching companies like Lions in the community to provide opportunities to work with young performers in various sports.



## SPORT



### FIRST AWARD • LEVEL 2 (BTEC)

This course is aimed at learners looking to progress onto a Level 3 course in Sport. Building the fundamental skills and underpinning knowledge to build upon in the future.

### ENTRY REQUIREMENTS

Four GCSEs at grade 3.

### WHAT NEXT

The course provides progression on to Level 3 courses.

## SPORT



### NATIONAL CERTIFICATE/NATIONAL EXTENDED CERTIFICATE • LEVEL 3 (BTEC)

This course is ideal for learners looking to combine their passion and interest for Sport with other subjects. You will learn by completing projects and assignments that are based on realistic workplace situations, activities and demands.

### ENTRY REQUIREMENTS

Five GCSEs at grade 9–4, including a grade 4 or above in English.

### WHAT NEXT

A large majority of students continue to study sport into Higher Education at renowned universities on sport related degrees. The programme also supports entry into employment in sports-related roles.

## SPORTS COACHING AND DEVELOPMENT



### NATIONAL FOUNDATION DIPLOMA/NATIONAL EXTENDED DIPLOMA • LEVEL 3 (BTEC)

Our Level 3 Sport provision drifts in two directions. Coaching and Development looks at the skills, qualities and characteristics needed to go into the Sporting world and play a pivotal role in developing athletes of the future.

### ENTRY REQUIREMENTS

Five GCSEs at grade 9–4, including English and Maths.

### WHAT NEXT

All of our Level 3 qualifications have UCAS points attached to them allowing students to progress on to Higher Education to study any sport-related degree.

### NOTES:

---



---



---



---

# SPORTS, FITNESS AND PERSONAL TRAINING



## NATIONAL FOUNDATION DIPLOMA/NATIONAL EXTENDED DIPLOMA • LEVEL 3 (BTEC)

Our Level 3 Sport provision splits in two directions, our Fitness pathway focuses more on the Fitness industry. We look at the skills, qualities and characteristics needed to work in the fitness environment.

### ENTRY REQUIREMENTS

Five GCSE's at grade 9–4, including English and Maths.

### WHAT NEXT

All of our Level 3 qualifications have UCAS points attached to them allowing students to progress on to Higher Education to study any sport-related degree. On completion of this courses, students will be fully accredited to work in the Fitness industry as a qualified instructor.

# SPORT AND EXERCISE SCIENCE



## HIGHER NATIONAL CERTIFICATE • LEVEL 4

The HNC programme in Sport and Exercise Science is designed to be a collaboration between theoretical knowledge and the application of this to a practical situation. Students will have the opportunity to deepen their understanding of key principles learnt at Level 3.

### ENTRY REQUIREMENTS

Completed one of the following: BTEC Extended Diploma in Performing Arts (Merit), Access to HE course, A Level(s) at C or above in a relevant subject We will also encourage

and consider applicants who possess a high level of experience in performing but may not have formal qualifications. All offers are subject to an interview and audition.

### WHAT NEXT

Students are able to progress directly into employment having gained a qualification in Personal Training and with the HNC programme providing evidence of knowledge and competence. Students may also be able to progress on to an honours degree at University to continue their studies.

## HNCs

Many students find HNCs a far more affordable option than attending university. Fees are reviewed each year but the course costs roughly half the amount of university tuition. Student loans are available through Student Finance, England. **See page 42.**



### UCAS TARIFF POINTS AVAILABLE

BTEC qualifications are equivalent to A Levels and they carry UCAS points. Find out more on page 30.

# FOOTBALL ACADEMY

**AN ADDED EXTRA OF STUDYING ON THE SPORTS COACHING AND DEVELOPMENT LEVEL 3 COURSE IS THAT YOU CAN BECOME PART OF OUR ANDOVER COLLEGE FOOTBALL ACADEMY PROGRAMME.**

We recognise that players develop at different times and as a result have a tiered programme for players of all abilities. Our coaches regularly evaluate performance, giving a target to improve individual performance and move into the next tier.

All players train at least three times per week and play in a comprehensive match programme. Our teams compete in the following leagues and competitions:

- National Football Youth League under 19's
- AFC Bournemouth
- College Second Team Sparsholt
- National League Youth Alliance
- Hampshire Colleges' Football League
- FA Youth Cup
- Hants Midweek Floodlit Cup, and
- English Colleges' Cup.

You will be required to purchase your training kit which is approximately £160.

**“STUDYING BTEC SPORT GAVE ME THE EXPERIENCE I NEEDED AS WELL AS THE KNOWLEDGE TO EXCEL IN MY COURSE. THE LECTURERS ARE DOWN TO EARTH AND THEY HAVE HELPED ME ACHIEVE THE BEST POSSIBLE RESULTS.”**

Skye: Level 3 BTEC Sport



# UNIFORMED SERVICES



If you're aiming for a rewarding career in the blue lights or armed services, we'll set you on the right path. If you're focused on joining the Police Force, Fire Service, Ambulance Service, Prison Service, British Army, Royal Navy/Royal Marines or Royal Air Force, our courses will give you the physical and mental training you need to succeed.

## ENTRY TO THE UNIFORMED SERVICES

### NCFE DIPLOMA • LEVEL 2

This course provides the skills, preparation, discipline and level of fitness required for a career in the uniformed services. It will prepare learners for progression on to future Level 3 study which allows them to pursue further routes in to the military or emergency services.

### ENTRY REQUIREMENTS

Four GCSE's at grade 9-3.

### WHAT NEXT

Progression to Level 3 Extended Diploma in Public Services or employment in the public and uniformed services.

## PREPARATION FOR THE MILITARY SERVICES (NEW FOR 2021!)

### NCFE CERTIFICATE/DIPLOMA • LEVEL 3

This course is designed to help learners prepare for the transition in to one of the services; Army, RAF, Navy. It seeks to develop the skills and attributes that are highly sought after making sure the learner is fully prepared for the demands of the selection tests.

### ENTRY REQUIREMENTS

Five GCSEs at grade 9–4, including English.

### WHAT NEXT

The qualification will allow progression on to further areas of study and provide informed and prepared potential recruits for the military services.

## EMERGENCY SERVICES

### NCFE DIPLOMA/EXTENDED DIPLOMA • LEVEL 3

This course prepares you for a career in the emergency services. Learners will undertake a wide variety of units, both practical and theoretical, that is mapped around Public services such as the Police, Fire Service, Prison Service and Coast Guard. Learners are expected to participate in all practical activity so that they develop the teamwork, leadership and physical fitness required by the emergency services.

### ENTRY REQUIREMENTS

Five GCSEs at grade 9–4, including English or Level 2 BTEC Diploma at Merit, or equivalent.

### WHAT NEXT

Progression to Higher Education or employment in the uniformed services.

## UNIFORMED SERVICES

### NCFE INTRODUCTORY CERTIFICATE/ CERTIFICATE • LEVEL 3

This Public Service course will sit alongside other subjects as part of a wider study programme. You will gain knowledge and understanding of a wide range of public services, including the Emergency Services. This course mixes classroom theory with hands-on practical experience and includes topics such as; physical fitness, career development, impact of war and managing conflict.

### ENTRY REQUIREMENTS

Five GCSEs at grade 9–4, including English or Level 2 BTEC Diploma or equivalent.

### WHAT NEXT

This course, in combination with A Levels in other disciplines, seeks to support you if you are intending to progress on to Higher Education or applying for your chosen public service career.

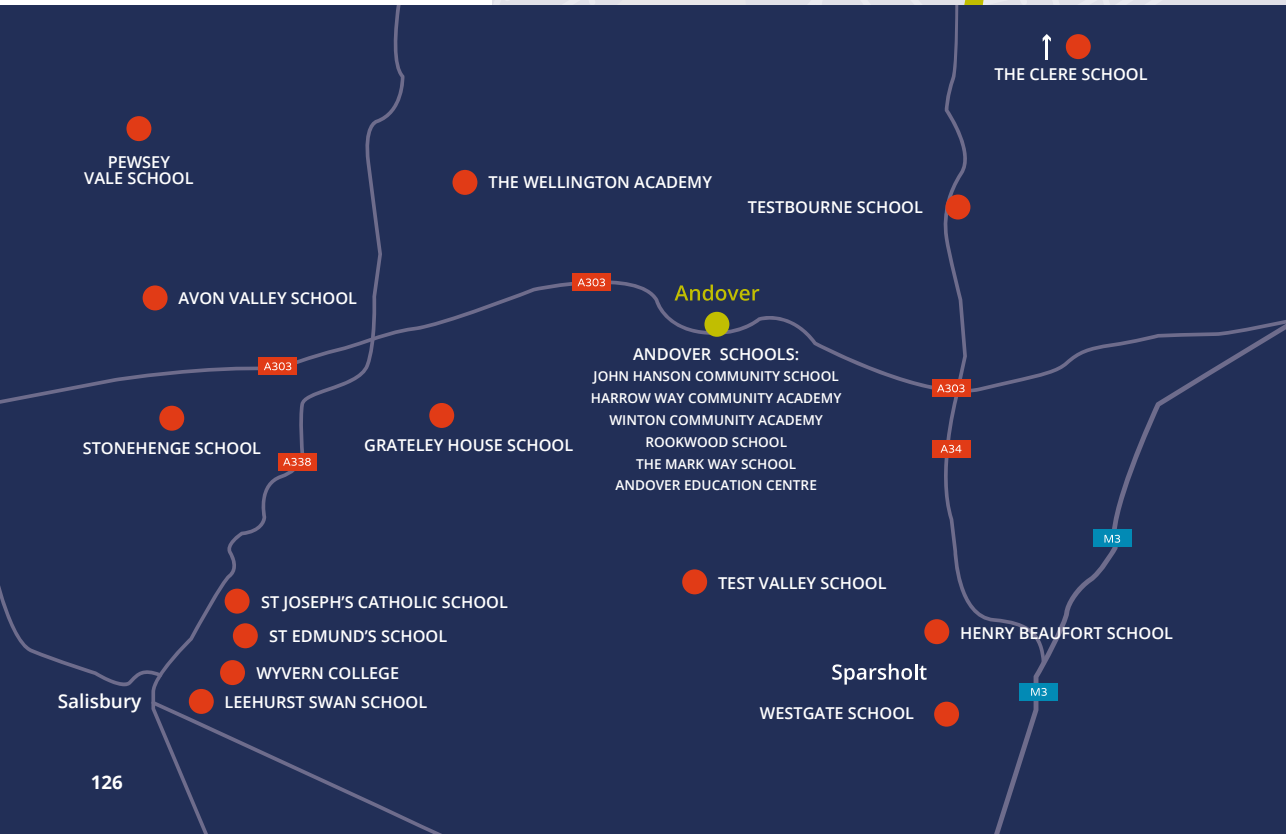


# GETTING HERE

We are very conveniently located and try to make travelling here as easy as possible.

We even offer a number of subsidised tickets on buses and train services. For more information, please visit the transport section of our website.

Students join us from many different schools over the region. You can see just some of our local schools shown below.



## BY BUS AND COACH

The college is a three-minute walk from the bus station. We also provide a subsidised bus service from Amesbury, Durrington and Shrewton to and from the college. Other areas may be incorporated if there is sufficient demand for a service and we have previously provided services in Upavon and Pewsey as well as the Winterbournes and Wallops.

## PARKING

There is no onsite parking available to students at the college, however there are a limited number of permits available for parking at Shepherds Spring Lane, just a three-minute walk away. For further details and pricing please speak to our friendly reception team on **01264 360000** Visit **[www.andover.ac.uk/transport](http://www.andover.ac.uk/transport)** for more information.

## BY TRAIN

Train services link Andover with towns and cities including, Winchester, Salisbury and Basingstoke.

## ACCESSIBILITY

We have good footpath access for wheelchair users and those with visual impairment and all of our buildings are fully accessible for wheelchair users. Should you require any special assistance please contact us on **01264 360000**.

## BY CAR

Follow signs for Town Centre and Leisure Centre. At the roundabout take the first exit into Charlton Road where you will find us on the right.

**FOR INFORMATION ON HOW TO GET HERE,  
BUS ROUTES AND SUBSIDISED COACH COSTS  
PLEASE VISIT [ANDOVER.AC.UK/TRANSPORT](http://ANDOVER.AC.UK/TRANSPORT)**



# MONEY MATTERS

## BURSARY FOR DEFINED LEARNERS

If you are aged 16–18 and in care, a care leaver, receiving Income Support or Universal Credit and supporting yourself or receiving Disability Living Allowance or Personal Independence Payment as well as Employment and Support Allowance or Universal Credit you may be entitled to a bursary to help cover the cost of travel, books, equipment etc.

---

## DISCRETIONARY LEARNER SUPPORT/BURSARY FUNDS

Funding is also available to students whose household income is below £32,960, this can help with costs associated with your studies including specialist uniform, protective equipment, travel or even childcare.

Please visit [www.andover.ac.uk/information/finance-funding](http://www.andover.ac.uk/information/finance-funding) for more information.

---

## 19+ ADVANCED LEARNER LOANS

Did you know the 19+ Advanced Learner Loan can cover the cost of tuition for Access courses and many Level 3 and 4 courses like Diplomas, Extended Diplomas and Advanced and Higher Apprenticeships?

Repayments don't begin until you finish the course and are earning at least £26,658.

Apply to college and once you receive an offer letter complete a loan application at [www.gov.uk/advanced-learner-loan/overview](http://www.gov.uk/advanced-learner-loan/overview)

For further details please go to [www.gov.uk/advanced-learner-loan](http://www.gov.uk/advanced-learner-loan) or for help and money advice please go to [www.moneyadviceservice.org.uk/en](http://www.moneyadviceservice.org.uk/en)

---

## CHILDCARE SUPPORT

Are you under 20 and have a child? You could be eligible for help from the Care-to-Learn Loan Scheme. Find out more by visiting [www.gov.uk/care-to-learn](http://www.gov.uk/care-to-learn)

If you are 20 or over and your household income is less than £32,960 then you may also get childcare support through our College Learner Support Fund.







**IF YOU ARE EXPERIENCING FINANCIAL DIFFICULTIES THAT MAY FORCE YOU TO WITHDRAW YOUR APPLICATION, PLEASE CALL OUR STUDENT FINANCE TEAM ON 01264 360014 BEFORE MAKING ANY DECISIONS!**

**VISIT: [WWW.ANDOVER.AC.UK/INFORMATION/FINANCE-FUNDING](http://WWW.ANDOVER.AC.UK/INFORMATION/FINANCE-FUNDING)**

# OUR OPEN EVENTS

**Tuesday 29 September 2020** 4.30–7.30pm

**Wednesday 30 September 2020** 4.30–7.30pm

**Tuesday 17 November 2020** 4.30–7.30pm

**Thursday 11 February 2021** 4.30–7.30pm

**Wednesday 28 April 2021** 4.30–7.30pm

**Thursday 24 June 2021** 4.30–7.30pm

Our Open Events might feel a little different this year  
but we can't wait to greet you in the safest way for us all.

Tel: 01264 360000

Email: [info@andover.ac.uk](mailto:info@andover.ac.uk)

[www.andover.ac.uk](http://www.andover.ac.uk)



A campus of

**SPARSHOLT**  
COLLEGE HAMPSHIRE

Designed by [oysterdesign.co.uk](http://oysterdesign.co.uk)

